

Recombinant Human SLC18A2 Protein, Myc/DDK-tagged, C13 and N15-labeled

Cat. No. SLC18A2-3812H Lot. No. (See product label)

SPECIFICATION

Product Overview

SLC18A2 MS Standard C13 and N15-labeled recombinant protein (NP_003045) with a C-terminal MYC/DDK tag, was expressed in HEK293 cells.

Species

Human

Source

HEK293

Description

This gene encodes an transmembrane protein that functions as an ATP-dependent transporter of monoamines, such as dopamine, norepinephrine, serotonin, and histamine. This protein transports amine neurotransmitters into synaptic vesicles. Polymorphisms in this gene may be associated with schizophrenia, bipolar disorder, and other neurological/psychiatric ailments.

Molecular Mass

55.5 kDa

AA Sequence

MALSELALVRWLQESRRSRKLILFIVFLALLLDNMLLTVVVPIIPSYLYSIKHEKNATEIQ
 TARPVHTASISDSFQSIFSYYDNSTMVTGNATRDLTTLHQTATQHMVTNASAVPSDCP
 SEDKDLLNENVQVGLLFASKATVQLITNPFIGLLTNRIGYPIPIFAGFCIMFVSTIMFAFS
 SSYAFLLIARSLQGIGSSCSSVAGMGMLASVYTDDEERGNVMGIALGGLAMGVLVG
 PPFGSVLYEFVGKTAPFLVLAALVLLDGAIQFLVLPQSRVQPESQKGTPLTTLKDPYI
 LIAAGSICFANMGIAMLEPALPIWMMETMCSRKWQLGVAFLPASISYLIGTNIFGILAH
 KMGRWLCALLGMIIVGVVSILCIPFAKNIYGLIAPNFGVGFAGMVDSSMMPIMGYLVDL
 RHVSVYGSVYAIADVAFCMGYAIGPSAGGAIKAIGFPWLMTIIGIIDILFAPLCFFLRS

 Tel: 1-631-559-9269 1-516-512-3133

 Email: info@creative-biomart.com  Fax: 1-631-938-8127

 45-1 Ramsey Road, Shirley, NY 11967, USA

PPAKEEKMAILMDHNCPIKTKMYTQNNIQSYPIGEDEESESDSGPTRTRRLEQKLISE
EDLAANDILDYKDDDDKV

Purity > 80% as determined by SDS-PAGE and Coomassie blue staining

Stability Stable for 3 months from receipt of products under proper storage and handling conditions.

Storage Store at -80 centigrade. Avoid repeated freeze-thaw cycles.

Concentration 50 µg/mL as determined by BCA

Storage Buffer 100 mM glycine, 25 mM Tris-HCl, pH 7.3.

GENE INFORMATION

Gene Name [SLC18A2 solute carrier family 18 member A2 \[Homo sapiens \(human\) \]](#)

Official Symbol [SLC18A2](#)

Synonyms SLC18A2; solute carrier family 18 (vesicular monoamine), member 2; VMAT2; synaptic vesicular amine transporter; SVAT; SVMT; monoamine transporter; vesicular amine transporter 2; vesicle monoamine/H⁺ antiporter; solute carrier family 18 member 2; vesicle monoamine transporter type 2; monoamine neurotransmitter transporter; VAT2; MGC26538; MGC120477; MGC120478;

Gene ID [6571](#)

mRNA Refseq [NM_003054](#)

Protein Refseq [NP_003045](#)

 Tel: 1-631-559-9269 1-516-512-3133

 Email: info@creative-biomart.com  Fax: 1-631-938-8127

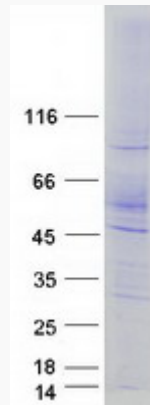
 45-1 Ramsey Road, Shirley, NY 11967, USA



MIM 193001

UniProt ID Q05940

SDS-PAGE



Tel: 1-631-559-9269 1-516-512-3133

Email: info@creative-biomart.com Fax: 1-631-938-8127

45-1 Ramsey Road, Shirley, NY 11967, USA