

## Recombinant Human SLC1A1 protein, His & T7-tagged

Cat. No. SLC1A1-1194H Lot. No. (See product label)

### SPECIFICATION

<b>Product Overview</b>	Recombinant Human SLC1A1 aa. (Ser115~Gly209 (Accession # P43005) fused with N-terminal His & T7 tag was produced in E. coli cells.
<b>Species</b>	Human
<b>Source</b>	E.coli
<b>ProteinLength</b>	Ser115~Gly209
<b>Description</b>	This gene encodes a member of the high-affinity glutamate transporters that play an essential role in transporting glutamate across plasma membranes. In brain, these transporters are crucial in terminating the postsynaptic action of the neurotransmitter glutamate, and in maintaining extracellular glutamate concentrations below neurotoxic levels. This transporter also transports aspartate, and mutations in this gene are thought to cause dicarboxylicamino aciduria, also known as glutamate-aspartate transport defect.
<b>Form</b>	Freeze-dried powder
<b>Molecular Mass</b>	Predicted Molecular Mass: 14.3kDa.
<b>Endotoxin</b>	<1.0EU per 1g (determined by the LAL method)
<b>Purity</b>	>95%

 Tel: 1-631-559-9269 1-516-512-3133

 Email: [info@creative-biomart.com](mailto:info@creative-biomart.com)  Fax: 1-631-938-8127

 45-1 Ramsey Road, Shirley, NY 11967, USA

<b>Characteristic</b>	The isoelectric point is 5.4.
<b>Applications</b>	SDS-PAGE; WB; ELISA; IP.
<b>Stability</b>	The thermal stability is described by the loss rate of the target protein. The loss rate was determined by accelerated thermal degradation test, that is, incubate the protein at 37°C for 48h, and no obvious degradation and precipitation were observed. (Referring from China Biological Products Standard, which was calculated by the Arrhenius equation.) The loss of this protein is less than 5% within the expiration date under appropriate storage condition.
<b>Storage</b>	Avoid repeated freeze/thaw cycles. Store at 2-8°C for one month. Aliquot and store at -80°C for 12 months.
<b>Storage buffer</b>	Supplied as lyophilized form in PBS, pH7.4, containing 5% trehalose, 0.01% sarcosyl.
<b>Reconstitution</b>	Reconstitute in sterile PBS, pH7.2-pH7.4.
<b>GENE INFORMATION</b>	
<b>Gene Name</b>	<a href="#">SLC1A1 solute carrier family 1 member 1 [ Homo sapiens (human) ]</a>
<b>Official Symbol</b>	<a href="#">SLC1A1</a>
<b>Synonyms</b>	SLC1A1; solute carrier family 1 member 1; DCBXA; EAAC1; EAAT3; SCZD18; excitatory amino acid transporter 3; excitatory amino acid carrier 1; neuronal and epithelial glutamate transporter; sodium-dependent glutamate/aspartate transporter 3; solute carrier family 1 (neuronal/epithelial high affinity glutamate transporter, system Xag), member 1
<b>Gene ID</b>	<a href="#">6505</a>

 Tel: 1-631-559-9269 1-516-512-3133

 Email: [info@creative-biomart.com](mailto:info@creative-biomart.com)  Fax: 1-631-938-8127

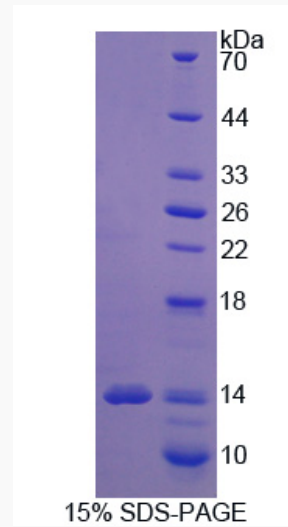
 45-1 Ramsey Road, Shirley, NY 11967, USA

mRNA Refseq [NM\\_004170.5](#)

Protein Refseq [NP\\_004161.4](#)

UniProt ID [P43005](#)

**SDS-PAGE**



 Tel: 1-631-559-9269 1-516-512-3133

 Email: [info@creative-biomart.com](mailto:info@creative-biomart.com)  Fax: 1-631-938-8127

 45-1 Ramsey Road, Shirley, NY 11967, USA