

# Recombinant Human SLC1A1 Protein (Ser115-Gly209), N-His tagged

**Cat. No.** SLC1A1-6298H    **Lot. No.** (See product label)

## SPECIFICATION

<b>Product Overview</b>	Recombinant human SLC1A1 (Ser115-Gly209) fused with the N-His tag was expressed in E. coli.
<b>Species</b>	Human
<b>Source</b>	E.coli
<b>ProteinLength</b>	Ser115-Gly209
<b>Form</b>	Lyophilized powder/frozen liquid
<b>Molecular Mass</b>	12.91 kDa
<b>Purity</b>	> 90 % as determined by SDS-PAGE
<b>Notes</b>	For research use only.
<b>Storage</b>	Use a manual defrost freezer and avoid repeated freeze thaw cycles. Store at 2 to 8 centigrade for one week. Store at -20 to -80 centigrade for twelve months from the date of receipt.
<b>Storage Buffer</b>	0.01M PBS, pH 7.4, 0.02 % NLS
<b>Reconstitution</b>	Reconstitute in sterile water for a stock solution.

 Tel: 1-631-559-9269    1-516-512-3133

 Email: [info@creative-biomart.com](mailto:info@creative-biomart.com)     Fax: 1-631-938-8127

 45-1 Ramsey Road, Shirley, NY 11967, USA

**Shipping** They are shipped out with dry ice/blue ice unless customers require otherwise.

## GENE INFORMATION

**Gene Name** SLC1A1 solute carrier family 1 member 1 [ Homo sapiens (human) ]

**Official Symbol** SLC1A1

**Synonyms** SLC1A1; solute carrier family 1 (neuronal/epithelial high affinity glutamate transporter, system Xag), member 1; excitatory amino acid transporter 3; EAAC1; EAAT3; excitatory amino acid carrier 1; solute carrier family 1 member 1; neuronal and epithelial glutamate transporter; sodium-dependent glutamate/aspartate transporter 3;

**Gene ID** 6505

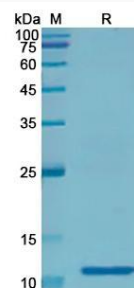
**mRNA Refseq** NM\_004170

**Protein Refseq** NP\_004161

**MIM** 133550

**UniProt ID** P43005

### SDS-PAGE



 Tel: 1-631-559-9269 1-516-512-3133

 Email: [info@creative-biomart.com](mailto:info@creative-biomart.com)  Fax: 1-631-938-8127

 45-1 Ramsey Road, Shirley, NY 11967, USA