

Recombinant Human SLC1A2 Protein, His-tagged

Cat. No. SLC1A2-2060H Lot. No. (See product label)

SPECIFICATION

Product Overview	Recombinant Human SLC1A2 Protein (Met1-Asn44) with N-His tag was expressed in E. coli.
Species	Human
Source	E.coli
ProteinLength	Met1-Asn44
Description	This gene encodes a member of a family of solute transporter proteins. The membrane-bound protein is the principal transporter that clears the excitatory neurotransmitter glutamate from the extracellular space at synapses in the central nervous system. Glutamate clearance is necessary for proper synaptic activation and to prevent neuronal damage from excessive activation of glutamate receptors. Improper regulation of this gene is thought to be associated with several neurological disorders. Alternatively spliced transcript variants of this gene have been identified.
Form	Freeze-dried powder
Molecular Mass	Predicted Molecular Mass: 8.7 kDa Accurate Molecular Mass: 9 kDa
Purity	> 90%
Applications	Positive Control; Immunogen; SDS-PAGE; WB.

 Tel: 1-631-559-9269 1-516-512-3133

 Email: info@creative-biomart.com  Fax: 1-631-938-8127

 45-1 Ramsey Road, Shirley, NY 11967, USA

Stability	The thermal stability is described by the loss rate. The loss rate was determined by accelerated thermal degradation test, that is, incubate the protein at 37 centigrade for 48h, and no obvious degradation and precipitation were observed. The loss rate is less than 5% within the expiration date under appropriate storage condition.
Storage	Avoid repeated freeze/thaw cycles. Store at 2-8 centigrade for one month. Aliquot and store at -80 centigrade for 12 months.
Storage Buffer	20mM Tris, 150mM NaCl, pH8.0, containing 1mM EDTA, 1mM DTT, 0.01% SKL, 5% Trehalose and Proclin300.
Reconstitution	Reconstitute in 20mM Tris, 150mM NaCl (pH8.0) to a concentration of 0.1-1.0 mg/mL. Do not vortex.

GENE INFORMATION

Gene Name	SLC1A2 solute carrier family 1 member 2 [Homo sapiens (human)]
Official Symbol	SLC1A2
Synonyms	Slc1a2; solute carrier family 1 member 2; Glt; Eaat2; Glt-1; excitatory amino acid transporter 2; glial glutamate transporter GLT1/V3; glial glutamate transporter GLT1/V4; glutamate transporter 1; high affinity glucose transporter; sodium-dependent glutamate/aspartate transporter 2; solute carrier family 1 (glial high affinity glutamate transporter), member 2
Gene ID	6506
mRNA Refseq	NM_004171
Protein Refseq	NP_004162

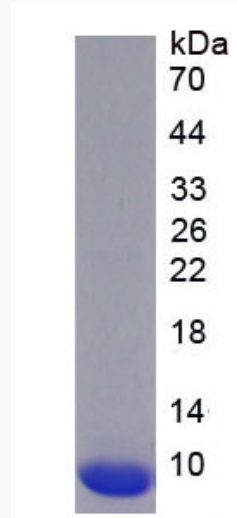
 Tel: 1-631-559-9269 1-516-512-3133

 Email: info@creative-biomart.com  Fax: 1-631-938-8127

 45-1 Ramsey Road, Shirley, NY 11967, USA

MIM 600300

UniProt ID P43004



 Tel: 1-631-559-9269 1-516-512-3133

 Email: info@creative-biomart.com  Fax: 1-631-938-8127

 45-1 Ramsey Road, Shirley, NY 11967, USA