

Recombinant Human SLC1A2 Protein, GST-tagged

Cat. No. SLC1A2-22H Lot. No. (See product label)

SPECIFICATION

Product Overview	Recombinant Human SLC1A2 Protein is produced by Wheat Germ (in vitro) expression system. This protein is fused with a GST tag at the N-terminal.
Species	Human
Source	Wheat Germ
ProteinLength	1-574 a.a.
Description	This gene encodes a member of a family of solute transporter proteins. The membrane-bound protein is the principal transporter that clears the excitatory neurotransmitter glutamate from the extracellular space at synapses in the central nervous system. Glutamate clearance is necessary for proper synaptic activation and to prevent neuronal damage from excessive activation of glutamate receptors. Mutations in and decreased expression of this protein are associated with amyotrophic lateral sclerosis. Alternatively spliced transcript variants of this gene have been described, but their full-length nature is not known.
Form	50 mM Tris-HCl, 10 mM reduced Glutathione, pH=8.0 in the elution buffer.
Molecular Mass	88.5 kDa
AA Sequence	MASTEGANNMPKQVEVRMHDSHLGSEEPKHRHLGLRLCDKLGKNLLLTIVFGVIL GAVCGLLRLASPIHPDVVMLIAFPGDILMRMLKMLILPLIISSLITGLSGLDAKASGRLL

 Tel: 1-631-559-9269 1-516-512-3133

 Email: info@creative-biomart.com  Fax: 1-631-938-8127

 45-1 Ramsey Road, Shirley, NY 11967, USA



GTRAMVYYMSTTIIAAVLGVILVLAIHGPNPKLKKQLGPGKKNDEVSSLDAFLDLIRNL
 FPENLVQACFQQIQTVTKKVLVAPPDDEEANATSAVVSLNETVTEVPEETKMVIKKG
 LEFKDGMNVLGLIGFFIAFGIAMGKMGDQAKLMVDFFNILNEIVMKLVIMIMWYSPLGI
 ACLICGKIIAIKDLEVVARQLGMYMVTVIIGLIHGGIFLPLIYFVTRKNPFSFFAGIFQA
 WITALGTASSAGTLPVTFRCLEENLGIDKRVTFRVLPVGATINMDGTALYEAVAAIFIA
 QMNGVVLDGGQIVTVSLTATLASVGAASIPSAGLVTMLLILTAVGLPTEDISLLVAVD
 WLLDRMRTSVNVVGDSTFGAGIVYHLSKSELDTIDSQHRVHEDIEMTKTQSIYDDMKN
 HRESNSNQCVYAAHNSVIVDECKVTLAANGKSADCSVEEEPWKREK

Applications

Enzyme-linked Immunoabsorbent Assay;
 Western Blot (Recombinant protein);
 Antibody Production;
 Protein Array

Notes

Best use within three months from the date of receipt of this protein.

Storage

Store at -80 centigrade. Aliquot to avoid repeated freezing and thawing.

GENE INFORMATION

Gene Name

SLC1A2 solute carrier family 1 (glial high affinity glutamate transporter), member 2 [Homo sapiens]

Official Symbol

SLC1A2

Synonyms

SLC1A2; excitatory amino acid transporter 2; EAAT2; GLT 1; glutamate/aspartate transporter II; excitotoxic amino acid transporter 2; GLT-1;

Gene ID

6506

mRNA Refseq

NM_001195728

Tel: 1-631-559-9269 1-516-512-3133

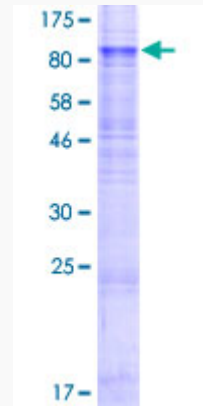
Email: info@creative-biomart.com Fax: 1-631-938-8127

45-1 Ramsey Road, Shirley, NY 11967, USA

Protein Refseq NP_001182657

MIM 600300

UniProt ID P43004



12.5% SDS-PAGE Stained with Coomassie Blue.

 Tel: 1-631-559-9269 1-516-512-3133

 Email: info@creative-biomart.com  Fax: 1-631-938-8127

 45-1 Ramsey Road, Shirley, NY 11967, USA