

Recombinant Human SLC1A2 protein, His-tagged

Cat. No. SLC1A2-2584H Lot. No. (See product label)

SPECIFICATION

| | |
|-------------------------|--|
| Product Overview | Recombinant Human SLC1A2 protein(460-574 aa), fused with N-terminal His tag, was expressed in E.coli. |
| Species | Human |
| Source | E.coli |
| ProteinLength | 460-574 aa |
| Form | The purified protein was lyophilized from sterile phosphate-buffered saline (PBS: 58 mM Na ₂ HPO ₄ , 17 mM NaH ₂ PO ₄ , 68 mM NaCl, pH 7.4). Prior to lyophilization, 5% (w/v) trehalose and 5% (w/v) mannitol were incorporated as cryoprotective excipients. The protein was eluted with a buffer containing 300 mM imidazole. |
| AASequence | PTEDISLLVAVDWLLDRMRTSVNVVGDSFGAGIVYHLSKSELDTIDSQHRVHEDIEMT KTQSIYDDMKNHRESNSNQCVYAAHNSVIVDECKVTLAANGKSADCSVEEEPWKRE K |
| Purity | 80%, by SDS-PAGE with Coomassie Brilliant Blue staining. |
| Storage | Store at 2-8°C for 1-2 weeks. Aliquot and store at -20°C to -80°C for up to 3 months, reconstitution with sterile water and addition of an equal volume of glycerol. Avoid repeat freeze-thaw cycles. |
| Reconstitution | Dissolve the product in 200 µl sterile water to achieve a working concentration of 0.25 |

 Tel: 1-631-559-9269 1-516-512-3133

 Email: info@creative-biomart.com  Fax: 1-631-938-8127

 45-1 Ramsey Road, Shirley, NY 11967, USA

g/μl. If experimental compatibility allows, mix the aqueous solution with an equal volume of glycerol (1:1 ratio) after initial reconstitution.

GENE INFORMATION

| | |
|------------------------|--|
| Gene Name | SLC1A2 solute carrier family 1 (glial high affinity glutamate transporter), member 2 [Homo sapiens] |
| Official Symbol | SLC1A2 |
| Synonyms | SLC1A2; solute carrier family 1 (glial high affinity glutamate transporter), member 2; excitatory amino acid transporter 2; EAAT2; GLT 1; glutamate/aspartate transporter II; excitotoxic amino acid transporter 2; sodium-dependent glutamate/aspartate transporter 2; GLT-1; |
| Gene ID | 6506 |
| mRNA Refseq | NM_001195728 |
| Protein Refseq | NP_001182657 |
| MIM | 600300 |
| UniProt ID | P43004 |

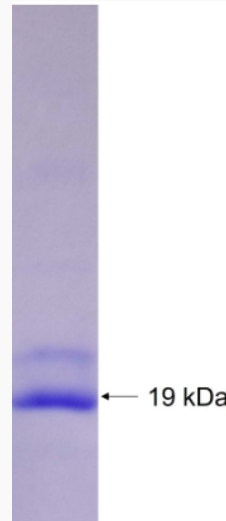
 Tel: 1-631-559-9269 1-516-512-3133

 Email: info@creative-biomart.com  Fax: 1-631-938-8127

 45-1 Ramsey Road, Shirley, NY 11967, USA



SDS-PAGE



Tel: 1-631-559-9269 1-516-512-3133

Email: info@creative-biomart.com Fax: 1-631-938-8127

45-1 Ramsey Road, Shirley, NY 11967, USA