

Recombinant Human SLC1A2 Protein (Pro460-Lys574), N-GST tagged

Cat. No. SLC1A2-6299H Lot. No. (See product label)

SPECIFICATION

Product Overview	Recombinant human SLC1A2 (Pro460-Lys574) fused with the N-GST tag was expressed in E. coli.
Species	Human
Source	E.coli
ProteinLength	Pro460-Lys574
Form	Lyophilized powder/frozen liquid
Molecular Mass	39.79 kDa
Purity	> 90 % as determined by SDS-PAGE
Notes	For research use only.
Storage	Use a manual defrost freezer and avoid repeated freeze thaw cycles. Store at 2 to 8 centigrade for one week. Store at -20 to -80 centigrade for twelve months from the date of receipt.
Storage Buffer	0.01M PBS, pH 7.4, 0.02 % NLS
Reconstitution	Reconstitute in sterile water for a stock solution.

 Tel: 1-631-559-9269 1-516-512-3133

 Email: info@creative-biomart.com  Fax: 1-631-938-8127

 45-1 Ramsey Road, Shirley, NY 11967, USA

Shipping They are shipped out with dry ice/blue ice unless customers require otherwise.

GENE INFORMATION

Gene Name SLC1A2 solute carrier family 1 member 2 [Homo sapiens (human)]

Official Symbol SLC1A2

Synonyms SLC1A2; solute carrier family 1 (glial high affinity glutamate transporter), member 2; excitatory amino acid transporter 2; EAAT2; GLT 1; glutamate/aspartate transporter II; excitotoxic amino acid transporter 2; sodium-dependent glutamate/aspartate transporter 2; GLT-1;

Gene ID 6506

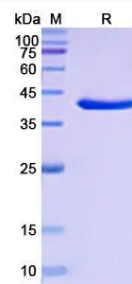
mRNA Refseq NM_001195728

Protein Refseq NP_001182657

MIM 600300

UniProt ID P43004

SDS-PAGE



 Tel: 1-631-559-9269 1-516-512-3133

 Email: info@creative-biomart.com  Fax: 1-631-938-8127

 45-1 Ramsey Road, Shirley, NY 11967, USA