

Recombinant Mouse SLC1A2 Protein (143-238 aa), GST-tagged

Cat. No. SLC1A2-813M Lot. No. (See product label)

SPECIFICATION

Product Overview	Recombinant Mouse SLC1A2 Protein (143-238 aa) is produced by E. coli expression system. This protein is fused with a GST tag at the N-terminal. Protein Description: Partial.
Species	Mouse
Source	E.coli
ProteinLength	143-238 aa
Description	Transports L-glutamate and also L- and D-aspartate. Essential for terminating the postsynaptic action of glutamate by rapidly roving released glutamate from the synaptic cleft. Acts as a symport by cotransporting sodium.
Form	Tris-based buffer, 50% glycerol
Molecular Mass	37.6 kDa
AA Sequence	HPGNPKLKKQLGPGKKNDEVSSLDNFLDLIRNLFPENLVQACFQQIQTVTKKVLVAP PSEEANTTKAVISMLNETMNEAPEETKIVIKKGGLEFKDG
Purity	> 90% as determined by SDS-PAGE.
Notes	Repeated freezing and thawing is not recommended. Store working aliquots at 4 centigrade for up to one week.

 Tel: 1-631-559-9269 1-516-512-3133

 Email: info@creative-biomart.com  Fax: 1-631-938-8127

 45-1 Ramsey Road, Shirley, NY 11967, USA

Storage The shelf life is related to many factors, storage state, buffer ingredients, storage temperature and the stability of the protein itself. Generally, the shelf life of liquid form is 6 months at -20 centigrade/-80 centigrade. The shelf life of lyophilized form is 12 months at -20 centigrade/-80 centigrade.

Concentration A hardcopy of COA with concentration instruction is sent along with the products.

GENE INFORMATION

Gene Name Slc1a2 solute carrier family 1 (glial high affinity glutamate transporter), member 2 [*Mus musculus*]

Official Symbol SLC1A2

Synonyms SLC1A2; GLT1; Eaat2; GLT-1; MGLT1; AI159670; 1700091C19Rik; 2900019G14Rik;

Gene ID 20511

mRNA Refseq NM_001077514

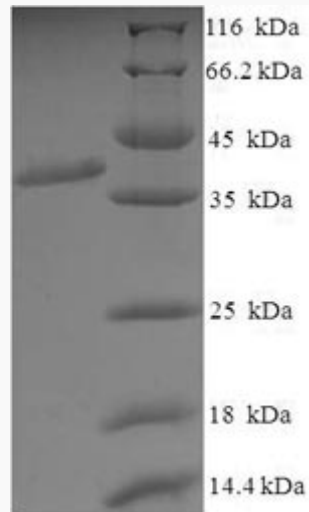
Protein Refseq NP_001070982

UniProt ID P43006

 Tel: 1-631-559-9269 1-516-512-3133

 Email: info@creative-biomart.com  Fax: 1-631-938-8127

 45-1 Ramsey Road, Shirley, NY 11967, USA



(Tris-Glycine gel) Discontinuous SDS-PAGE (reduced) with 5% enrichment gel and 15% separation gel.

 Tel: 1-631-559-9269 1-516-512-3133

 Email: info@creative-biomart.com  Fax: 1-631-938-8127

 45-1 Ramsey Road, Shirley, NY 11967, USA