

Recombinant Human SLC1A3 protein, His-KSI-tagged

Cat. No. SLC1A3-1376H Lot. No. (See product label)

SPECIFICATION

Product Overview	Recombinant Human SLC1A3 protein(P43003)(146-236aa), fused to N-terminal His-KSI tag, was expressed in E. coli.
Species	Human
Source	E.coli
ProteinLength	146-236aa
Form	If the delivery form is liquid, the default storage buffer is Tris/PBS-based buffer, 5%-50% glycerol. If the delivery form is lyophilized powder, the buffer before lyophilization is Tris/PBS-based buffer, 6% Trehalose, pH 8.0.
Molecular Mass	25.5 kDa
Purity	Greater than 85% as determined by SDS-PAGE.
Storage	Store at -20°C/-80°C upon receipt, aliquoting is necessary for mutiple use. Avoid repeated freeze-thaw cycles.
Reconstitution	It is recommended that sterile water be added to the vial to prepare a stock solution of 0.2 ug/ul. Centrifuge the vial at 4°C before opening to recover the entire contents.

GENE INFORMATION

 Tel: 1-631-559-9269 1-516-512-3133

 Email: info@creative-biomart.com  Fax: 1-631-938-8127

 45-1 Ramsey Road, Shirley, NY 11967, USA



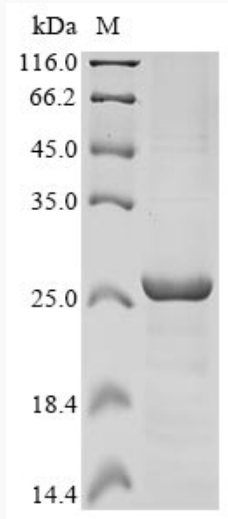
Gene Name	SLC1A3 solute carrier family 1 (glial high affinity glutamate transporter), member 3 [Homo sapiens]
Official Symbol	SLC1A3
Synonyms	SLC1A3; solute carrier family 1 (glial high affinity glutamate transporter), member 3; excitatory amino acid transporter 1; EA6; EAAT1; GLAST; glutamate transporter variant EAAT1ex9skip; GLAST-1; solute carrier family 1 member 3; sodium-dependent glutamate/aspartate transporter 1; GLAST1; FLJ25094;
Gene ID	6507
mRNA Refseq	NM_001166695
Protein Refseq	NP_001160167
MIM	600111
UniProt ID	P43003

 Tel: 1-631-559-9269 1-516-512-3133

 Email: info@creative-biomart.com  Fax: 1-631-938-8127

 45-1 Ramsey Road, Shirley, NY 11967, USA

SDS-PAGE



 Tel: 1-631-559-9269 1-516-512-3133

 Email: info@creative-biomart.com  Fax: 1-631-938-8127

 45-1 Ramsey Road, Shirley, NY 11967, USA