

## Recombinant Human SLC1A3 Protein (1-542), N-GST-tagged

Cat. No. SLC1A3-298H Lot. No. (See product label)

### SPECIFICATION

<b>Product Overview</b>	Human SLC1A3 full-length ORF ( NP_004163.2, 1 a.a. - 542 a.a.) recombinant protein with GST-tag at N-terminal was expressed in Wheat Germ (in vitro).
<b>Species</b>	Human
<b>Source</b>	Wheat Germ
<b>ProteinLength</b>	1-542
<b>Description</b>	This gene encodes a member of a member of a high affinity glutamate transporter family. This gene functions in the termination of excitatory neurotransmission in central nervous system. Mutations are associated with episodic ataxia, Type 6. Alternative splicing results in multiple transcript variants.
<b>Molecular Mass</b>	85.9 kDa
<b>AA Sequence</b>	<p>MTKSNGEERPKMGGRMERFQQGVSKRRTLLAKKKVQNITKEDVKSylFRNAFVLLTVT  AVIVGTILGFTLRPYRMSYREVKYFSFPGELLMRMLQMLVLPLISSLVTGMAALDSKA  SGKMGMRVVYYMTTIIIVVIGIIIIHPGKGTKENMHREGKIVRVTAADAFLDLIRN  MFPPNLVEACFKQFKTNYEKRSFKVPIQANETLVGAVINNVSEAMETLTRITEELVPV  PGSVNGVNALGLVVFMSCFGVIGNMKEQGGALREFFDSLNEAIMRLVAVIMWYAP  VGILFLIAGKIVEMEDMGVIGGQLAMYTVTVIVGLLIHAVIVLPLLYFLVTRKNPWVFIG  GLLQALITALGTSSSSATLPITFKCLEENNGVDKRVTRFVLPVGATINMDGTALYEALA  AIFIAQVNNFELNFGQIITISITATAASIGAAGIPQAGLVTMVIVLTSVGLPTDDITLIAVD  WFLDRLRRTTNVLGDSL GAGIVEHL SRHELKNRDVEMGNSVIEENEMKKPYQLIAQD</p>

 Tel: 1-631-559-9269 1-516-512-3133

 Email: [info@creative-biomart.com](mailto:info@creative-biomart.com)  Fax: 1-631-938-8127

 45-1 Ramsey Road, Shirley, NY 11967, USA

	NETEKPIDSETKM
<b>Applications</b>	Enzyme-linked Immunoabsorbent Assay Western Blot (Recombinant protein) Antibody Production Protein Array
<b>Notes</b>	Best use within three months from the date of receipt of this protein.
<b>Storage</b>	Store at -80 centigrade. Aliquot to avoid repeated freezing and thawing.
<b>Storage Buffer</b>	50 mM Tris-HCl, 10 mM reduced Glutathione, pH=8.0 in the elution buffer.
<b>GENE INFORMATION</b>	
<b>Gene Name</b>	SLC1A3 solute carrier family 1 member 3 [ Homo sapiens (human) ]
<b>Official Symbol</b>	SLC1A3
<b>Synonyms</b>	SLC1A3; solute carrier family 1 member 3; EA6; EAAT1; GLAST; GLAST1; excitatory amino acid transporter 1; GLAST-1; glutamate/aspartate transporter 1; sodium-dependent glutamate/aspartate transporter 1; solute carrier family 1 (glial high affinity glutamate transporter), member 3
<b>Gene ID</b>	6507
<b>mRNA Refseq</b>	NM_004172
<b>Protein Refseq</b>	NP_004163
<b>MIM</b>	600111

 Tel: 1-631-559-9269 1-516-512-3133

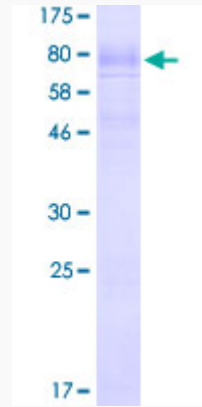
 Email: [info@creative-biomart.com](mailto:info@creative-biomart.com)  Fax: 1-631-938-8127

 45-1 Ramsey Road, Shirley, NY 11967, USA

UniProt ID

P43003

Quality Control  
Testing



12.5% SDS-PAGE Stained with Coomassie Blue.

 Tel: 1-631-559-9269 1-516-512-3133

 Email: [info@creative-biomart.com](mailto:info@creative-biomart.com)  Fax: 1-631-938-8127

 45-1 Ramsey Road, Shirley, NY 11967, USA