

## Recombinant Human SLC1A3 protein, His-KSI-tagged

Cat. No. SLC1A3-745H Lot. No. (See product label)

### SPECIFICATION

<b>Product Overview</b>	Recombinant Human SLC1A3 protein(P43003)(69-86aa), fused with N-terminal His and KSI tag, was expressed in E.coli.
<b>Species</b>	Human
<b>Source</b>	E.coli
<b>ProteinLength</b>	69-86aa
<b>Form</b>	If the delivery form is liquid, the default storage buffer is Tris/PBS-based buffer, 5%-50% glycerol. If the delivery form is lyophilized powder, the buffer before lyophilization is Tris/PBS-based buffer, 6% Trehalose, pH 8.0.
<b>Molecular Mass</b>	17.6 kDa
<b>Purity</b>	Greater than 85% as determined by SDS-PAGE.
<b>Storage</b>	Store at -20°C/-80°C upon receipt, aliquoting is necessary for mutiple use. Avoid repeated freeze-thaw cycles.
<b>Reconstitution</b>	We recommend that this vial be briefly centrifuged prior to opening to bring the contents to the bottom. Please reconstitute protein in deionized sterile water to a concentration of 0.1-1.0 mg/mL. We recommend to add 5-50% of glycerol (final concentration) and aliquot for long-term storage at -20°C/-80°C.

 Tel: 1-631-559-9269 1-516-512-3133

 Email: [info@creative-biomart.com](mailto:info@creative-biomart.com)  Fax: 1-631-938-8127

 45-1 Ramsey Road, Shirley, NY 11967, USA

**AA Sequence** RPYRMSYREVKYFSFPGE

## GENE INFORMATION

**Gene Name** SLC1A3 solute carrier family 1 (glial high affinity glutamate transporter), member 3 [ Homo sapiens ]

**Official Symbol** SLC1A3

**Synonyms** SLC1A3; solute carrier family 1 (glial high affinity glutamate transporter), member 3; excitatory amino acid transporter 1; EA6; EAAT1; GLAST; glutamate transporter variant EAAT1ex9skip; GLAST-1; solute carrier family 1 member 3; sodium-dependent glutamate/aspartate transporter 1; GLAST1; FLJ25094;

**Gene ID** 6507

**mRNA Refseq** NM\_001166695

**Protein Refseq** NP\_001160167

**MIM** 600111

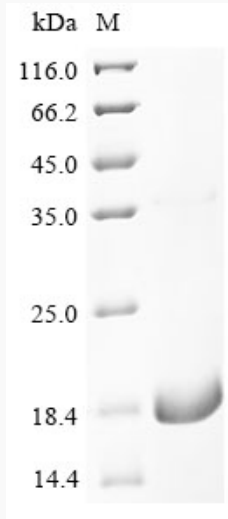
**UniProt ID** P43003

 Tel: 1-631-559-9269 1-516-512-3133

 Email: [info@creative-biomart.com](mailto:info@creative-biomart.com)  Fax: 1-631-938-8127

 45-1 Ramsey Road, Shirley, NY 11967, USA

**SDS-PAGE**



 Tel: 1-631-559-9269 1-516-512-3133

 Email: [info@creative-biomart.com](mailto:info@creative-biomart.com)  Fax: 1-631-938-8127

 45-1 Ramsey Road, Shirley, NY 11967, USA