

Recombinant Human SLC1A3 protein, GST-tagged

Cat. No. SLC1A3-7854H Lot. No. (See product label)

SPECIFICATION

Product Overview	Recombinant Human SLC1A3 protein(471-542 aa), fused with N-terminal GST tag, was expressed in E. coli.
Species	Human
Source	E. coli
ProteinLength	471-542 aa
Form	The purified protein was lyophilized from sterile phosphate-buffered saline (PBS: 58 mM Na ₂ HPO ₄ , 17 mM NaH ₂ PO ₄ , 68 mM NaCl, pH 8.0). Prior to lyophilization, 5% (w/v) trehalose and 5% (w/v) mannitol were incorporated as cryoprotective excipients. The protein was eluted with a buffer containing 100 mM reduced glutathione (GSH).
AASequence	VDWFLDRLRTTTTNVLGDSL GAGIVEHL SRHELKNRDVEMGNSVIEENEMKKPYQLIA QDNETEKPIDSETKM
Purity	85%, by SDS-PAGE.
Storage	Store at 2-8°C for 1-2 weeks. Aliquot and store at -20°C to -80°C for up to 3 months, reconstitution with sterile water and addition of an equal volume of glycerol. Avoid repeat freeze-thaw cycles.
Reconstitution	It is recommended that sterile water be added to the vial to prepare a stock solution of

 Tel: 1-631-559-9269 1-516-512-3133

 Email: info@creative-biomart.com  Fax: 1-631-938-8127

 45-1 Ramsey Road, Shirley, NY 11967, USA

0.25 ug/ul. Centrifuge the vial at 4°C before opening to recover the entire contents.

GENE INFORMATION

Gene Name	SLC1A3 solute carrier family 1 (glial high affinity glutamate transporter), member 3 [Homo sapiens]
Official Symbol	SLC1A3
Synonyms	SLC1A3; solute carrier family 1 (glial high affinity glutamate transporter), member 3; excitatory amino acid transporter 1; EA6; EAAT1; GLAST; glutamate transporter variant EAAT1ex9skip; GLAST-1; solute carrier family 1 member 3; sodium-dependent glutamate/aspartate transporter 1; GLAST1; FLJ25094;
mRNA Refseq	NM_001166695
Protein Refseq	NP_001160167
MIM	600111
UniProt ID	P43003
Gene ID	6507

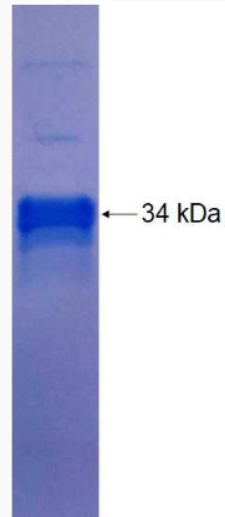
 Tel: 1-631-559-9269 1-516-512-3133

 Email: info@creative-biomart.com  Fax: 1-631-938-8127

 45-1 Ramsey Road, Shirley, NY 11967, USA



SDS-PAGE



Tel: 1-631-559-9269 1-516-512-3133

Email: info@creative-biomart.com Fax: 1-631-938-8127

45-1 Ramsey Road, Shirley, NY 11967, USA