

Recombinant Human SLC1A6 Protein, His-tagged

Cat. No. SLC1A6-523H Lot. No. (See product label)

SPECIFICATION

Product Overview	Recombinant Human SLC1A6(Gly156~Asn264) fused with His tag at N-terminal was expressed in E. coli.
Species	Human
Source	E.coli
ProteinLength	Gly156~Asn264
Form	PBS, pH7.4, containing 0.01% SKL, 1mM DTT, 5% Trehalose and Proclin300.
Molecular Mass	15.7kDa
Endotoxin	<1.0EU per 1g (determined by the LAL method)
Purity	>95%
Applications	Positive Control; Immunogen; SDS-PAGE; WB. If bio-activity of the protein is needed, please check active protein.
Stability	The thermal stability is described by the loss rate. The loss rate was determined by accelerated thermal degradation test, that is, incubate the protein at 37 centigrade for 48h, and no obvious degradation and precipitation were observed. The loss rate is less than 5% within the expiration date under appropriate storage condition.

 Tel: 1-631-559-9269 1-516-512-3133

 Email: info@creative-biomart.com  Fax: 1-631-938-8127

 45-1 Ramsey Road, Shirley, NY 11967, USA

Storage Avoid repeated freeze/thaw cycles. Store at 2-8 centigrade for one month. Aliquot and store at -80 centigrade for 12 months.

Reconstitution Reconstitute in PBS or others.

GENE INFORMATION

Gene Name SLC1A6 solute carrier family 1 (high affinity aspartate/glutamate transporter), member 6 [Homo sapiens]

Official Symbol SLC1A6

Synonyms SLC1A6; solute carrier family 1 (high affinity aspartate/glutamate transporter), member 6; excitatory amino acid transporter 4; EAAT4; solute carrier family 1 member 6; sodium-dependent glutamate/aspartate transporter; MGC33092; MGC43671;

Gene ID 6511

mRNA Refseq NM_005071

Protein Refseq NP_005062

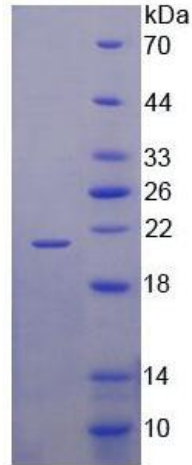
MIM 600637

UniProt ID P48664

 Tel: 1-631-559-9269 1-516-512-3133

 Email: info@creative-biomart.com  Fax: 1-631-938-8127

 45-1 Ramsey Road, Shirley, NY 11967, USA



15% SDS-PAGE

Tel: 1-631-559-9269 1-516-512-3133

Email: info@creative-biomart.com Fax: 1-631-938-8127

45-1 Ramsey Road, Shirley, NY 11967, USA