

# Recombinant Human SLC22A1 protein, His-SUMO-tagged

Cat. No. SLC22A1-8544H Lot. No. (See product label)

## SPECIFICATION

<b>Product Overview</b>	Recombinant Human SLC22A1 protein(O15245)(43-149aa), fused with N-terminal His and SUMO tag, was expressed in E.coli.
<b>Species</b>	Human
<b>Source</b>	E.coli
<b>ProteinLength</b>	43-149aa
<b>Form</b>	If the delivery form is liquid, the default storage buffer is Tris/PBS-based buffer, 5%-50% glycerol. If the delivery form is lyophilized powder, the buffer before lyophilization is Tris/PBS-based buffer, 6% Trehalose, pH 8.0.
<b>Molecular Mass</b>	24.5 kDa
<b>Purity</b>	Greater than 85% as determined by SDS-PAGE.
<b>Storage</b>	Store at -20°C/-80°C upon receipt, aliquoting is necessary for mutiple use. Avoid repeated freeze-thaw cycles.
<b>Reconstitution</b>	We recommend that this vial be briefly centrifuged prior to opening to bring the contents to the bottom. Please reconstitute protein in deionized sterile water to a concentration of 0.1-1.0 mg/mL. We recommend to add 5-50% of glycerol (final concentration) and aliquot for long-term storage at -20°C/-80°C.

 Tel: 1-631-559-9269 1-516-512-3133

 Email: [info@creative-biomart.com](mailto:info@creative-biomart.com)  Fax: 1-631-938-8127

 45-1 Ramsey Road, Shirley, NY 11967, USA

**AA Sequence** GFTPDHHCQSPGVAELSQRRCGWSPAEEELNYTVPGLGPAGEAFLGQCRRYEVDWN  
QSALSCVDPLASLATNRSHLPLGPCQDGWVYDTPGSSIVTEFNLVCADSWKLD

## GENE INFORMATION

**Gene Name** SLC22A1 solute carrier family 22 (organic cation transporter), member 1 [ Homo sapiens ]

**Official Symbol** SLC22A1

**Synonyms** SLC22A1; solute carrier family 22 (organic cation transporter), member 1; solute carrier family 22 member 1; OCT1; organic cation transporter 1; HOCT1; oct1\_cds;

**Gene ID** 6580

**mRNA Refseq** NM\_003057

**Protein Refseq** NP\_003048

**MIM** 602607

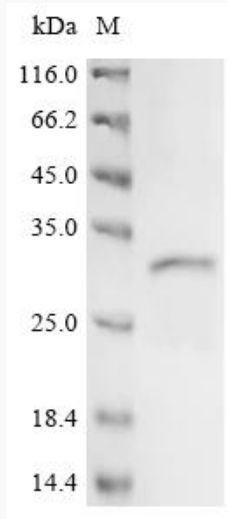
**UniProt ID** O15245

 Tel: 1-631-559-9269 1-516-512-3133

 Email: [info@creative-biomart.com](mailto:info@creative-biomart.com)  Fax: 1-631-938-8127

 45-1 Ramsey Road, Shirley, NY 11967, USA

**SDS-PAGE**



 Tel: 1-631-559-9269 1-516-512-3133

 Email: [info@creative-biomart.com](mailto:info@creative-biomart.com)  Fax: 1-631-938-8127

 45-1 Ramsey Road, Shirley, NY 11967, USA