

Recombinant Human SLC22A5 Protein, GST-tagged

Cat. No. SLC22A5-668H Lot. No. (See product label)

SPECIFICATION

Product Overview Recombinant Human SLC22A5 Full-Length ORF Protein (1-557 aa) is produced by Wheat Germ (in vitro) expression system. This protein is fused with a GST tag at the N-terminal.

Species Human

Source Wheat Germ

ProteinLength 1-557 aa

Form 50 mM Tris-HCl, 10 mM reduced Glutathione, pH=8.0 in the elution buffer.

Molecular Mass 89.1 kDa

AA Sequence

MRDYDEVTAFLGEWGPFQRLIFFLLSASIIPNGFTGLSSVFLIATPEHRCRVPDAANL
SSAWRNHTVPLRLRDGREVPHSCRRYRLATIANFSALGLEPGRDVDLGQLEQESCP
DGWEFSQDVYVLTIVTEWNLVCEDDWKAPLTISLFFVGVLLGSFISGQLSDRFGRKN
VLFVMTGMQTGFSFLQIFSKNFEMFVVLVFLVGMGQISNYVAAFVLGTEILGKSVRIIF
STLGVCIFYAFGYMVLPLFAYFIRDWRMLLVALTMPGVLCVALWWFIPESRWLISQ
GRFEEAEVIIRKAAKANGIVVPSTIFDPSELQDLSSKKQQSHNILDLLRTWNIRMVTIM
SIMLWMTISVGYFGLSLDTPNLHGDIFVNCFLSAMVEVPAYVLAWLLLQYLPRRYSM
ATALFLGGSVLLFMQLVPPDLYYLATVLVMVGKFGVTAAFSMVYVYTAELYPTVVRN
MGVGVSSSTASRLGSILSPYFVYLGAYDRFLPYILMGSLTILTILFLPESFGTPLPDT
IDQMLRVKGMKHRKTPSHTRMLKDGQERPTILKSTAF

 Tel: 1-631-559-9269 1-516-512-3133

 Email: info@creative-biomart.com  Fax: 1-631-938-8127

 45-1 Ramsey Road, Shirley, NY 11967, USA

Applications Enzyme-linked Immunoabsorbent Assay; Western Blot (Recombinant protein); Antibody Production; Protein Array

Notes Best use within three months from the date of receipt of this protein

Storage Store at -80 centigrade. Aliquot to avoid repeated freezing and thawing.

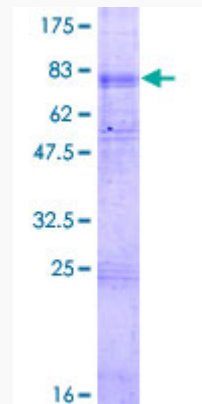
GENE INFORMATION

Gene Name SLC22A5 solute carrier family 22 member 5 [Homo sapiens (human)]

Official Symbol SLC22A5

Synonyms CDSP; FLJ46769; OCTN2; OCTN2VT;

Gene ID 6584



12.5% SDS-PAGE Stained with Coomassie Blue.

 Tel: 1-631-559-9269 1-516-512-3133

 Email: info@creative-biomart.com  Fax: 1-631-938-8127

 45-1 Ramsey Road, Shirley, NY 11967, USA