

## Recombinant Human SLC22A8 Protein, GST-tagged

Cat. No. SLC22A8-3828H Lot. No. (See product label)

### SPECIFICATION

<b>Product Overview</b>	Recombinant Human SLC22A8 Protein (1-542 aa) is produced by Wheat Germ (in vitro) expression system. This protein is fused with a GST tag at the N-terminal.
<b>Species</b>	Human
<b>Source</b>	Wheat Germ
<b>ProteinLength</b>	1-542 aa
<b>Description</b>	The protein encoded by this gene is involved in the sodium-independent transport and excretion of organic anions, some of which are potentially toxic. The encoded protein is an integral membrane protein and appears to be localized to the basolateral membrane of the kidney.
<b>Form</b>	50 mM Tris-HCl, 10 mM reduced Glutathione, pH=8.0 in the elution buffer.
<b>Molecular Mass</b>	86.3 kDa
<b>AA Sequence</b>	MTFSEILDRVGSMSGHFQFLHVAI LGLPILNMANHNLLQIFTAATPVHHCRRPPHNASTG PWVLPMPGNGKPERCLRFVHPPNASLPNDTQRAMEPCLDGWVYNSTKDSIVTEWD LVCNSNKLKEMAQSIFMAGILIGGLVGLSDRFRGRRPILTC SYLLLAASGSGAAFP TFPIYMVFRFLCGFGISGITLSTVILNVEWVPTRMRAIMSTALGYCYTFGQFILPGLAY AIPQWRWLQLTVSIPFFVFFLSSWWTPE SIRWLVLSGKSSKALKILRRVAVFNGKKE EGERLSLEELKLN LQKEISLAKAKYTASDLFRIPMLRRMTFCLSLAWFATGFAYYSLA MGVEEFGVNLYILQIIFGGVDVPAKFITILSLSYLGRHTTQAAALLLAGGAILALTFVPL

 Tel: 1-631-559-9269 1-516-512-3133

 Email: [info@creative-biomart.com](mailto:info@creative-biomart.com)  Fax: 1-631-938-8127

 45-1 Ramsey Road, Shirley, NY 11967, USA

DLQTVRTVLAVFGKGCLSSSFSCFLYTSELYPTVIRQTGMGVSNLWTRVGSMSVPL  
 VKITGEVQPFIPNIIYGITALLGGSAAALFLPETLNQPLPETIEDLENWSLRAKKPKQEPE  
 VEKASQRIPLQPHGPGLGSS

**Applications**

Enzyme-linked Immunoabsorbent Assay; Western Blot (Recombinant protein);  
 Antibody Production; Protein Array

**Notes**

Best use within three months from the date of receipt of this protein.

**Storage**

Store at -80 centigrade. Aliquot to avoid repeated freezing and thawing.

## GENE INFORMATION

**Gene Name**

SLC22A8 solute carrier family 22 (organic anion transporter), member 8 [ Homo sapiens ]

**Official Symbol**

SLC22A8

**Synonyms**

SLC22A8; OAT3; hOAT3; MGC24086;

**Gene ID**

9376

**mRNA Refseq**

NM\_001184736

**Protein Refseq**

NP\_001171665

**MIM**

607581

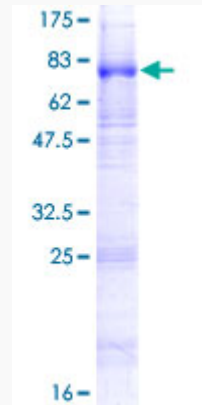
**UniProt ID**

Q8TCC7

 Tel: 1-631-559-9269 1-516-512-3133

 Email: [info@creative-biomart.com](mailto:info@creative-biomart.com)  Fax: 1-631-938-8127

 45-1 Ramsey Road, Shirley, NY 11967, USA



12.5% SDS-PAGE Stained with Coomassie Blue.

Tel: 1-631-559-9269 1-516-512-3133

Email: [info@creative-biomart.com](mailto:info@creative-biomart.com) Fax: 1-631-938-8127

45-1 Ramsey Road, Shirley, NY 11967, USA