

## Recombinant Human SLC23A2 Protein, GST-tagged

Cat. No. SLC23A2-664H Lot. No. (See product label)

### SPECIFICATION

<b>Product Overview</b>	Recombinant Human SLC23A2 Full-Length ORF Protein (1-425 aa) is produced by Wheat Germ (in vitro) expression system. This protein is fused with a GST tag at the N-terminal.
<b>Species</b>	Human
<b>Source</b>	Wheat Germ
<b>ProteinLength</b>	1-425 aa
<b>Description</b>	The absorption of vitamin C into the body and its distribution to organs requires two sodium-dependent vitamin C transporters. This gene encodes one of the two required transporters and the encoded protein accounts for tissue-specific uptake of vitamin C. Previously, this gene had an official symbol of SLC23A1.
<b>Form</b>	50 mM Tris-HCl, 10 mM reduced Glutathione, pH=8.0 in the elution buffer.
<b>Molecular Mass</b>	72.8 kDa
<b>AA Sequence</b>	MMGIGKNTTSKSMEAGSSTEGKYEDEAKHPAFFTLPPVINGGATSSGEQDNEDTEL MAIYTTENGIAEKSSLAETLDSTGSLDPQRSDMIYTIEDVPPWYLCIFLGLQHLYLTCFS GTIAVPFLLADAMCVGYDQWATSQLIGTIFFCVGITTLLQTTFGCRLPLFQASAFALA PARAILSLDKWKCNTTDSVANGTAELLHTEHIWYPRIREIQGAIMSSLIEVVIGLLGL PGALLKYIGPLTITPTVALIGLSGFQAAGERAGKHWGIAMLTIFLVLLFSQYARNVKFP LPIYKSKKGWTAYKLQLFKMFPIILAILVSWLLCFIFTVTDVFPPDSTKYGFYARTDAR

 Tel: 1-631-559-9269 1-516-512-3133

 Email: [info@creative-biomart.com](mailto:info@creative-biomart.com)  Fax: 1-631-938-8127

 45-1 Ramsey Road, Shirley, NY 11967, USA

QGVLLVAPWFKVPYPFQWGLPTVSAAGVIGMLSAVVASIIESIGDYACARLSCAPP  
PPIHAINRYVPEKTSS

**Applications**

Enzyme-linked Immunoabsorbent Assay; Western Blot (Recombinant protein);  
Antibody Production; Protein Array

**Notes**

Best use within three months from the date of receipt of this protein

**Storage**

Store at -80 centigrade. Aliquot to avoid repeated freezing and thawing.

## GENE INFORMATION

**Gene Name**

SLC23A2 solute carrier family 23 (nucleobase transporters), member 2 [ Homo sapiens ]

**Official Symbol**

SLC23A2

**Synonyms**

SLC23A2; KIAA0238; SVCT2; YSPL2; hSVCT2;

**Gene ID**

9962

**mRNA Refseq**

NM\_005116

**Protein Refseq**

NP\_005107

**MIM**

603791

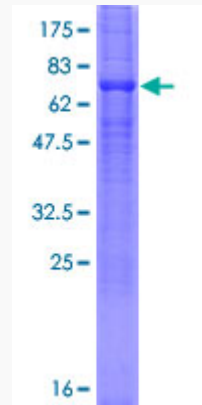
**UniProt ID**

Q9UGH3

 Tel: 1-631-559-9269 1-516-512-3133

 Email: [info@creative-biomart.com](mailto:info@creative-biomart.com)  Fax: 1-631-938-8127

 45-1 Ramsey Road, Shirley, NY 11967, USA



12.5% SDS-PAGE Stained with Coomassie Blue.

 Tel: 1-631-559-9269 1-516-512-3133

 Email: [info@creative-biomart.com](mailto:info@creative-biomart.com)  Fax: 1-631-938-8127

 45-1 Ramsey Road, Shirley, NY 11967, USA