

Recombinant Human SLC25A39 protein, His-tagged

Cat. No. SLC25A39-1684H Lot. No. (See product label)

SPECIFICATION

Product Overview	Recombinant Human SLC25A39 protein(Ile9~Phe339), fused with N-terminal His tag, was expressed in E. coli.
Species	Human
Source	E.coli
ProteinLength	Ile9~Phe339
Tag	N-His
Form	PBS, pH7.4, containing 0.01% SKL, 5% Trehalose.
Molecular Mass	40.1kDa
Endotoxin	<1.0EU per 1µg (determined by the LAL method)
Purity	> 90%
Storage	Avoid repeated freeze/thaw cycles. Store at 2-8°C for one month. Aliquot and store at -80°C for 12 months.
Reconstitution	Reconstitute in 10mM PBS (pH7.4) to a concentration of 0.1-1.0 mg/mL. Do not vortex.

 Tel: 1-631-559-9269 1-516-512-3133

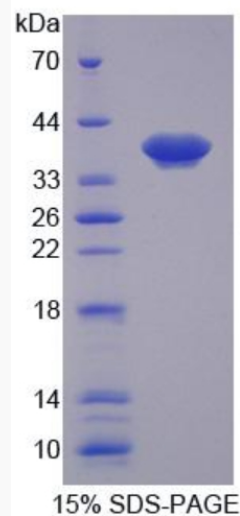
 Email: info@creative-biomart.com  Fax: 1-631-938-8127

 45-1 Ramsey Road, Shirley, NY 11967, USA

GENE INFORMATION

Gene Name	SLC25A39 solute carrier family 25, member 39 [Homo sapiens]
Official Symbol	SLC25A39
Synonyms	CGI69; CGI-69
Gene ID	51629
mRNA Refseq	NM_016016.2
Protein Refseq	NP_057100.1
MIM	610820
UniProt ID	Q9BZJ4

SDS-PAGE



Tel: 1-631-559-9269 1-516-512-3133

Email: info@creative-biomart.com Fax: 1-631-938-8127

45-1 Ramsey Road, Shirley, NY 11967, USA