

Recombinant Human SLC25A42 Protein, Myc/DDK-tagged, C13 and N15-labeled

Cat. No. SLC25A42-2251H **Lot. No.** (See product label)

SPECIFICATION

Product Overview	SLC25A42 MS Standard C13 and N15-labeled recombinant protein (NP_848621) with a C-terminal MYC/DDK tag, was expressed in HEK293 cells.
Species	Human
Source	HEK293
Description	This gene encodes a solute carrier family 25 protein. Solute carrier family 25 proteins are localized to mitochondria and play critical roles in the transport of molecules across the inner mitochondrial membrane. The encoded protein is a mitochondrial transporter for coenzyme A (CoA) and adenosine 3',5'-diphosphate.
Molecular Mass	35.4 kDa
AA Sequence	<p>MGNGVKEGPVRLHEDAEAVLSSSVSSKRDRHQVLSSLLPGALAGALAKTAVAPLDR TKIIFQVSSKRFSAKEAFRVLYTYTLNEGFLSLWRGNSATMVRVVPYAAIQFSAHEEY KRILGSYYGFRGEALPPWPRLFAGALAGTTAASLTYPDLVRARMAVTPKEMYSNIF HVFIRISREEGLKTLYHGFMPPTVLGVIPYAGLSFFTYETLKSLHREYSGRRQPYPFER MIFGACAGLIGQSASYPLDVVRRRMQTAGVTGYPRASIARTLRTIVREEGAVRGLYK GLSMNWWKGPPIAVGISFTTFDLMQIMLRHLQSTRTRPLEQKLISEEDLAANDILDYKD DDDKV</p>
Purity	> 80% as determined by SDS-PAGE and Coomassie blue staining

 Tel: 1-631-559-9269 1-516-512-3133

 Email: info@creative-biomart.com  Fax: 1-631-938-8127

 45-1 Ramsey Road, Shirley, NY 11967, USA

Stability	Stable for 3 months from receipt of products under proper storage and handling conditions.
Storage	Store at -80 centigrade. Avoid repeated freeze-thaw cycles.
Concentration	50 µg/mL as determined by BCA
Storage Buffer	100 mM glycine, 25 mM Tris-HCl, pH 7.3.

GENE INFORMATION

Gene Name	SLC25A42 solute carrier family 25 member 42 [Homo sapiens (human)]
Official Symbol	SLC25A42
Synonyms	SLC25A42; solute carrier family 25, member 42; solute carrier family 25 member 42; MGC26694; FLJ54826;
Gene ID	284439
mRNA Refseq	NM_178526
Protein Refseq	NP_848621
MIM	610823
UniProt ID	Q86VD7

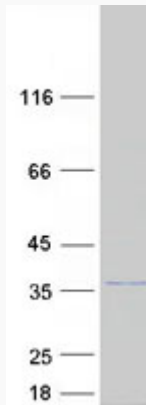
 Tel: 1-631-559-9269 1-516-512-3133

 Email: info@creative-biomart.com  Fax: 1-631-938-8127

 45-1 Ramsey Road, Shirley, NY 11967, USA



SDS-PAGE



Tel: 1-631-559-9269 1-516-512-3133

Email: info@creative-biomart.com Fax: 1-631-938-8127

45-1 Ramsey Road, Shirley, NY 11967, USA