

# Active Recombinant Full Length Human SLC25A5 Protein, C-Flag-tagged

**Cat. No.** SLC25A5-300HFL    **Lot. No.** (See product label)

## SPECIFICATION

<b>Product Overview</b>	Recombinant Full Length Human SLC25A5 Protein, fused to Flag-tag at C-terminus, was expressed in Mammalian cells.
<b>Species</b>	Human
<b>Source</b>	Mammalian Cells
<b>Description</b>	This gene is a member of the mitochondrial carrier subfamily of solute carrier protein genes. The product of this gene functions as a gated pore that translocates ADP from the cytoplasm into the mitochondrial matrix and ATP from the mitochondrial matrix into the cytoplasm. The protein forms a homodimer embedded in the inner mitochondria membrane. Suppressed expression of this gene has been shown to induce apoptosis and inhibit tumor growth. The human genome contains several non-transcribed pseudogenes of this gene.
<b>Form</b>	25 mM Tris HCl, pH 7.3, 100 mM glycine, 10% glycerol.
<b>Bio-activity</b>	Pull-down assay
<b>Molecular Mass</b>	32.7 kDa
<b>AA Sequence</b>	MTDAAVSFAKDFLAGGVAAAISKTAVAPIERVKLLLQVQHASKQITADKQYKGIIDCVV RIPKEQGVLSF WRGNLANVIRYFPTQALNFAFKDKYKQIFLGGVDKRTQFWRYFAG NLASGGAAGATSLCFVYPLDFARTR LAADVGKAGAEREFRGLGDCLVKIYKSDGIK

 Tel: 1-631-559-9269    1-516-512-3133

 Email: [info@creative-biomart.com](mailto:info@creative-biomart.com)     Fax: 1-631-938-8127

 45-1 Ramsey Road, Shirley, NY 11967, USA

GLYQQGFNVSVQGGIIYRAAYFGIYDTAKGMLPDPKNTHI VISWMIAQTVTAVAGLTSY  
 PFDTVRRRMMMQSGRKGTDIMYTGTLDCWRKIARDEGGKAFFKGAWSNVLR  
 GMGGAFVLVLYDEIKKYTRTRPLEQKLISEEDLAANDILDYKDDDDKV

<b>Purity</b>	> 80% as determined by SDS-PAGE and Coomassie blue staining.
<b>Stability</b>	Stable for 12 months from the date of receipt of the product under proper storage and handling conditions. Avoid repeated freeze-thaw cycles.
<b>Storage</b>	Store at -80 centigrade.
<b>Concentration</b>	>50 ug/mL as determined by microplate BCA method.
<b>Preparation</b>	Recombinant protein was captured through anti-DDK affinity column followed by conventional chromatography steps.
<b>Protein Families</b>	Druggable Genome, Transmembrane
<b>Protein Pathways</b>	Calcium signaling pathway, Huntington's disease, Parkinson's disease
<b>Full Length</b>	Full L.

## GENE INFORMATION

<b>Gene Name</b>	SLC25A5 solute carrier family 25 member 5 [ Homo sapiens (human) ]
<b>Official Symbol</b>	SLC25A5
<b>Synonyms</b>	T2; T3; 2F1; AAC2; ANT2
<b>Gene ID</b>	292

 Tel: 1-631-559-9269 1-516-512-3133

 Email: [info@creative-biomart.com](mailto:info@creative-biomart.com)  Fax: 1-631-938-8127

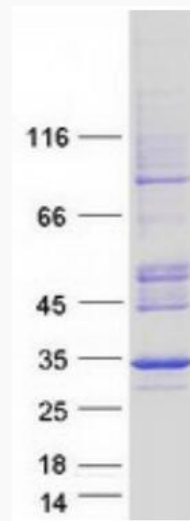
 45-1 Ramsey Road, Shirley, NY 11967, USA

mRNA Refseq [NM\\_001152.5](#)

Protein Refseq [NP\\_001143.2](#)

MIM [300150](#)

UniProt ID [P05141](#)



Coomassie blue staining of purified SLC25A5 protein.

 Tel: 1-631-559-9269 1-516-512-3133

 Email: [info@creative-biomart.com](mailto:info@creative-biomart.com)  Fax: 1-631-938-8127

 45-1 Ramsey Road, Shirley, NY 11967, USA