

# Recombinant Full Length Human SLC29A1 Protein, C-Flag-tagged

**Cat. No.** SLC29A1-1370HFL    **Lot. No.** (See product label)

## SPECIFICATION

<b>Product Overview</b>	Recombinant Full Length Human SLC29A1 Protein, fused to Flag-tag at C-terminus, was expressed in Mammalian cells.
<b>Species</b>	Human
<b>Source</b>	Mammalian Cells
<b>Description</b>	This gene is a member of the equilibrative nucleoside transporter family. The gene encodes a transmembrane glycoprotein that localizes to the plasma and mitochondrial membranes and mediates the cellular uptake of nucleosides from the surrounding medium. The protein is categorized as an equilibrative (as opposed to concentrative) transporter that is sensitive to inhibition by nitrobenzylthioinosine (NBMPR). Nucleoside transporters are required for nucleotide synthesis in cells that lack de novo nucleoside synthesis pathways, and are also necessary for the uptake of cytotoxic nucleosides used for cancer and viral chemotherapies. Multiple alternatively spliced variants, encoding the same protein, have been found for this gene.
<b>Form</b>	25 mM Tris HCl, pH 7.3, 100 mM glycine, 10% glycerol.
<b>Molecular Mass</b>	50 kDa
<b>AA Sequence</b>	MTTSHQPQDRYKAVWLIFFMLGLGTLWPWNFFMTATQYFTNRLDMSQNVSLVTAEL SKDAQASAAPAAPL PERNLSAIFNNVMTLCAMPLLLLFTYLNSFLHQRIPQSVRILG

 Tel: 1-631-559-9269    1-516-512-3133

 Email: [info@creative-biomart.com](mailto:info@creative-biomart.com)     Fax: 1-631-938-8127

 45-1 Ramsey Road, Shirley, NY 11967, USA



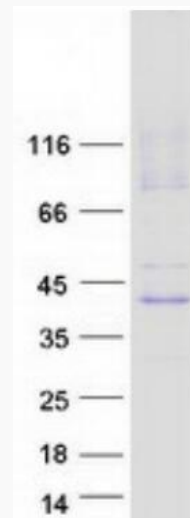
SLVAILLVFLITAILVKVQLDALPFF VITMIKIVLINSFGAILQGSLFGLAGLLPASYTAPI  
 MSGQGLAGFFASVAMICAIASGSELSAFAFGYFI TACAVIILTIICYLGLPRLEFYRYYQ  
 QLKLEGPGEQETKLDLISKGEEPRAGKEESGVSVSNSQPTNESH SIKAILKNISVLAF  
 SVCFIFTITIGMFPVAVTVEVKSSIAGSSTWERYFIPVSCFLT FNIFDWLGRSLTAV FMW  
 PGKDSRWLPSLVLARLVFVPLLLLCNIKPRRYLTVVFEHDAWFIFFMAAFSAFNGYLA  
 SLCMCFGPK  
 KVKPAEAETAGAIMAFFLCLGLALGAVFSFLFRAIVTRTRPLEQKLISEEDLAANDILD  
 YKDDDDKV

<b>Purity</b>	> 80% as determined by SDS-PAGE and Coomassie blue staining.
<b>Stability</b>	Stable for 12 months from the date of receipt of the product under proper storage and handling conditions. Avoid repeated freeze-thaw cycles.
<b>Storage</b>	Store at -80 centigrade.
<b>Concentration</b>	>50 ug/mL as determined by microplate BCA method.
<b>Preparation</b>	Recombinant protein was captured through anti-DDK affinity column followed by conventional chromatography steps.
<b>Protein Families</b>	Transmembrane
<b>Full Length</b>	Full L.

## GENE INFORMATION

<b>Gene Name</b>	SLC29A1 solute carrier family 29 member 1 (Augustine blood group) [ Homo sapiens (human) ]
<b>Official Symbol</b>	SLC29A1

<b>Synonyms</b>	ENT1
<b>Gene ID</b>	2030
<b>mRNA Refseq</b>	NM_001078177.2
<b>Protein Refseq</b>	NP_001071645.1
<b>MIM</b>	602193
<b>UniProt ID</b>	Q99808



Coomassie blue staining of purified SLC29A1 protein.

 Tel: 1-631-559-9269 1-516-512-3133

 Email: [info@creative-biomart.com](mailto:info@creative-biomart.com)  Fax: 1-631-938-8127

 45-1 Ramsey Road, Shirley, NY 11967, USA