

Recombinant Human SLC29A1 Protein, Myc/DDK-tagged, C13 and N15-labeled

Cat. No. SLC29A1-3953H **Lot. No.** (See product label)

SPECIFICATION

Product Overview

SLC29A1 MS Standard C13 and N15-labeled recombinant protein (NP_001071645) with a C-terminal MYC/DDK tag, was expressed in HEK293 cells.

Species

Human

Source

HEK293

Description

This gene is a member of the equilibrative nucleoside transporter family. The gene encodes a transmembrane glycoprotein that localizes to the plasma and mitochondrial membranes and mediates the cellular uptake of nucleosides from the surrounding medium. The protein is categorized as an equilibrative (as opposed to concentrative) transporter that is sensitive to inhibition by nitrobenzylthioinosine (NBMPR). Nucleoside transporters are required for nucleotide synthesis in cells that lack de novo nucleoside synthesis pathways, and are also necessary for the uptake of cytotoxic nucleosides used for cancer and viral chemotherapies. Multiple alternatively spliced variants, encoding the same protein, have been found for this gene.

Molecular Mass

50 kDa

AA Sequence

MTTSHQPQDRYKAVWLIFFMLGLGTLWPWNFFMTATQYFTNRLDMSQNVSLVTAEL
SKDAQASAAPAPLPERNLSAIFNNVMTLCAMLPLLLFTYLNSFLHQRIPQSVRILG
SLVAILLVFLITAILVKVQLDALPFFVITMIKIVLINSFGAILQGSLFGLAGLLPASYPAPIM

 Tel: 1-631-559-9269 1-516-512-3133

 Email: info@creative-biomart.com  Fax: 1-631-938-8127

 45-1 Ramsey Road, Shirley, NY 11967, USA

SGQGLAGFFASVAMICAIASGSELSESAFGYFITACAVIILTIICYLGLPRLEFYRYYYQQ
 LKLEGPGEQETKLDLISKGEEPRAKKEESGVSVSNSQPTNESHNIKAILKNISVLAFS
 VCFITITIGMFPVAVTVEVKSSIAGSSTWERYFIPVSCFLTFNIFDWLGRSLTAVFMWP
 GKDSRWLPSLVLARLVFVPLLLLCNIKPRRYLTVVFEHDAWFIFMAAFASNGYLAS
 LCMCFGPKKVKPAEAETAGAIMAFFLCLGLALGAVFSFLFRAIVTRTRPLEQKLISEE
 DLAANDILDYKDDDDKV

Purity > 80% as determined by SDS-PAGE and Coomassie blue staining

Stability Stable for 3 months from receipt of products under proper storage and handling conditions.

Storage Store at -80 centigrade. Avoid repeated freeze-thaw cycles.

Concentration 50 µg/mL as determined by BCA

Storage Buffer 100 mM glycine, 25 mM Tris-HCl, pH 7.3.

GENE INFORMATION

Gene Name [SLC29A1 solute carrier family 29 member 1 \(Augustine blood group\) \[Homo sapiens \(human\) \]](#)

Official Symbol [SLC29A1](#)

Synonyms SLC29A1; solute carrier family 29 (nucleoside transporters), member 1; ENT1; equilibrative nucleoside transporter 1; nucleoside transporter, es-type; solute carrier family 29 member 1; solute carrier family 29, member 1; equilibrative NBMPR-sensitive nucleoside transporter; equilibrative nitrobenzylmercaptapurine riboside-sensitive nucleoside transporter; equilibrative nitrobenzylmercaptapurine riboside (NBMPR)-sensitive nucleoside transporter; MGC1465; MGC3778;

 Tel: 1-631-559-9269 1-516-512-3133

 Email: info@creative-biomart.com  Fax: 1-631-938-8127

 45-1 Ramsey Road, Shirley, NY 11967, USA

Gene ID 2030

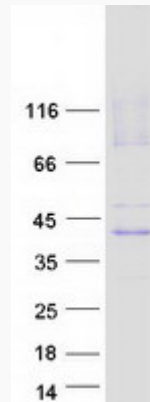
mRNA Refseq [NM_001078177](#)

Protein Refseq [NP_001071645](#)

MIM 602193

UniProt ID [Q99808](#)

SDS-PAGE



 Tel: 1-631-559-9269 1-516-512-3133

 Email: info@creative-biomart.com  Fax: 1-631-938-8127

 45-1 Ramsey Road, Shirley, NY 11967, USA