

Recombinant Human SLC29A1 Protein, GST-tagged

Cat. No. SLC29A1-669H Lot. No. (See product label)

SPECIFICATION

Product Overview Recombinant Human SLC29A1 Full-Length ORF Protein (1-456 aa) is produced by Wheat Germ (in vitro) expression system. This protein is fused with a GST tag at the N-terminal.

Species Human

Source Wheat Germ

ProteinLength 1-456 aa

Form 50 mM Tris-HCl, 10 mM reduced Glutathione, pH=8.0 in the elution buffer.

Molecular Mass 76.6 kDa

AA Sequence

MTTSHQPQDRYKAVWLIFFMLGLGTLWPWNFFMTATQYFTNRLDMSQNVSLVTAEL
 SKDAQASAAPAAPLPERNLSAIFNNVMTLCAMPLLLLFTYLNSFLHQRIPQSVRILG
 SLVAILLVFLITAILVKVQLDALPFFVITMIKIVLINSFGAILQGSLFGLAGLLPASYPAPIM
 SGQGLAGFFASVAMICAIASGSELSAFAFGYFITACAVIILTIICYLGLPRLEFYRYYYQQ
 LKLEGPGEQETKLDLISKGEEPRAGKEESGVSVSNSQPTNESHSHKAILKNISVLAFS
 VCFIFTITIGMFPVAVTVEVKSSIAGSSTWERYFIPVSCFLTFNIFDWLGRSLTAVFMWP
 GKDSRWLPSLVLARLVFVPLLLLCNIKPRRYLTVVFEHDAWFIFFMAAFASNGYLAS
 LCMCFGPKKVKPAEAETAGAIMAFFLCLGLALGAVFSFLFRAIV

Applications Enzyme-linked Immunoabsorbent Assay; Western Blot (Recombinant protein); Antibody Production; Protein Array

 Tel: 1-631-559-9269 1-516-512-3133

 Email: info@creative-biomart.com  Fax: 1-631-938-8127

 45-1 Ramsey Road, Shirley, NY 11967, USA

Notes Best use within three months from the date of receipt of this protein

Storage Store at -80 centigrade. Aliquot to avoid repeated freezing and thawing.

GENE INFORMATION

Gene Name SLC29A1 solute carrier family 29 (nucleoside transporters), member 1 [Homo sapiens]

Official Symbol SLC29A1

Synonyms SLC29A1; ENT1; MGC1465; MGC3778;

Gene ID 2030

mRNA Refseq NM_001078174

Protein Refseq NP_001071642

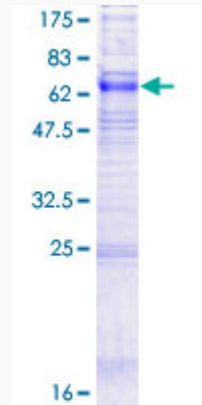
MIM 602193

UniProt ID Q99808

 Tel: 1-631-559-9269 1-516-512-3133

 Email: info@creative-biomart.com  Fax: 1-631-938-8127

 45-1 Ramsey Road, Shirley, NY 11967, USA



12.5% SDS-PAGE Stained with Coomassie Blue.

 Tel: 1-631-559-9269 1-516-512-3133

 Email: info@creative-biomart.com  Fax: 1-631-938-8127

 45-1 Ramsey Road, Shirley, NY 11967, USA