

Recombinant Human SLC29A2 Protein, MYC/DDK-tagged, C13 and N15-labeled

Cat. No. SLC29A2-354H Lot. No. (See product label)

SPECIFICATION

Product Overview	SLC29A2 MS Standard C13 and N15-labeled recombinant protein (NP_001523) with a C-terminal MYC/DDK tag, was expressed in HEK293 cells.
Species	Human
Source	HEK293
Description	The uptake of nucleosides by transporters, such as SLC29A2, is essential for nucleotide synthesis by salvage pathways in cells that lack de novo biosynthetic pathways. Nucleoside transport also plays a key role in the regulation of many physiologic processes through its effect on adenosine concentration at the cell surface (Griffiths et al., 1997 [PubMed 9396714]). [supplied by OMIM, Nov 2008]
Molecular Mass	50.1 kDa
AA Sequence	MARGDAPRDSYHLVGISFFILGLGTLWPWNFFITAIPYFQARLAGAGNSTARILSTNHT GPEDAFNFNNWVTLLSQLPLLLFTLLNSFLYQCVPETVRILGSLLAILLLFALTAALVKV DMSPGPFPSITMASVCFINSFSAVLQGSFLGQLGTMPSTYSTLFLSGQGLAGIFAALA MLLSMASGVDAETSALGYFITPCVGILMSIVCYLSLPHLKFARYYLANKSSQAQAQEL ETKAELLQSDENGIPSSPQKVALTLDLDLEKEPESEPDEPQKPGKPSVFTVFQKIWLT ALCLVLVFTVTLVFPVPAITAMVTSSTSPGKWSQFFNPICCFLLFNIMDWLGRSLTSYF LWPDEDSRLLPLLVCLRFLVPLFMLCHVPQRSRLPILFPQDAYFITMLLFAVSNGY LVSLTMCLAPRQVLPHEREVAGALMTFFLALGLSCGASLSFLFKALLTRTRPLEQKLI

Tel: 1-631-559-9269 1-516-512-3133

Email: info@creative-biomart.com Fax: 1-631-938-8127

45-1 Ramsey Road, Shirley, NY 11967, USA



SEEDLAANDILDYKDDDDKV

Purity > 80% as determined by SDS-PAGE and Coomassie blue staining

Stability Stable for 3 months from receipt of products under proper storage and handling conditions.

Storage Store at -80 centigrade. Avoid repeated freeze-thaw cycles.

Concentration 50 µg/mL as determined by BCA

Storage Buffer 100 mM glycine, 25 mM Tris-HCl, pH 7.3.

GENE INFORMATION

Gene Name SLC29A2 solute carrier family 29 (nucleoside transporters), member 2 [Homo sapiens (human)]

Official Symbol SLC29A2

Synonyms ENT2; DER12; HNP36

Gene ID 3177

mRNA Refseq NM_001532

Protein Refseq NP_001523

MIM 602110

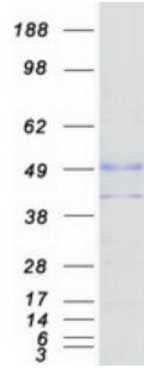
UniProt ID Q14542

Tel: 1-631-559-9269 1-516-512-3133

Email: info@creative-biomart.com Fax: 1-631-938-8127

45-1 Ramsey Road, Shirley, NY 11967, USA

SDS-PAGE



 Tel: 1-631-559-9269 1-516-512-3133

 Email: info@creative-biomart.com  Fax: 1-631-938-8127

 45-1 Ramsey Road, Shirley, NY 11967, USA