

Recombinant Human SLC29A2 Protein, GST-tagged

Cat. No. SLC29A2-654H Lot. No. (See product label)

SPECIFICATION

Product Overview	Recombinant Human SLC29A2 Full-Length ORF Protein (1-361 aa) is produced by Wheat Germ (in vitro) expression system. This protein is fused with a GST tag at the N-terminal.
Species	Human
Source	Wheat Germ
ProteinLength	1-361 aa
Description	The uptake of nucleosides by transporters, such as SLC29A2, is essential for nucleotide synthesis by salvage pathways in cells that lack de novo biosynthetic pathways. Nucleoside transport also plays a key role in the regulation of many physiologic processes through its effect on adenosine concentration at the cell surface.
Form	50 mM Tris-HCl, 10 mM reduced Glutathione, pH=8.0 in the elution buffer.
Molecular Mass	65.45 kDa
AA Sequence	MARGDAPRDSYHLVGISFFILGLGTLWPWNFFITAIPYFQARLAGAGNSTARILSTNHT GPEDAFNFNHWVTLLSQLPLLLFTLLNSFLYQCVPETVRILGSLLAILLFALTAALVKV DMSPGPFSSITMASVCFINSFSAVLQGSFLGQLGTMPSTYSTLFLSGQGLAGIFAALA MLLAMASGVDAETSALGYFITPCVGILMSIVCYLSLPHLKFARYYLANKSSQAQAQEL ETKAELLQSDLADSAVPCVGLHSHPVRLPRHSHGDQLHQSWEVESVLQPHLLLPP

 Tel: 1-631-559-9269 1-516-512-3133

 Email: info@creative-biomart.com  Fax: 1-631-938-8127

 45-1 Ramsey Road, Shirley, NY 11967, USA

LQHHGLAGTEPDLLL PVARRGQPAAAPAGLPVAVPVRAPLHAVPRAPEVPAAHPLPT
GCLLHHLHAALCRF

Applications

Enzyme-linked Immunoabsorbent Assay; Western Blot (Recombinant protein);
Antibody Production; Protein Array

Notes

Best use within three months from the date of receipt of this protein

Storage

Store at -80 centigrade. Aliquot to avoid repeated freezing and thawing.

GENE INFORMATION

Gene Name

SLC29A2 solute carrier family 29 (nucleoside transporters), member 2 [Homo sapiens]

Official Symbol

[SLC29A2](#)

Synonyms

ENT2; DER12; HNP36

Gene ID

[3177](#)

mRNA Refseq

[NM_001532.2](#)

Protein Refseq

[NP_001523.2](#)

MIM

[602110](#)

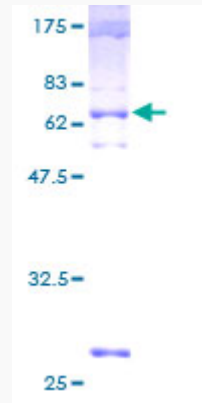
UniProt ID

[Q14542](#)

 Tel: 1-631-559-9269 1-516-512-3133

 Email: info@creative-biomart.com  Fax: 1-631-938-8127

 45-1 Ramsey Road, Shirley, NY 11967, USA



12.5% SDS-PAGE Stained with Coomassie Blue.

 Tel: 1-631-559-9269 1-516-512-3133

 Email: info@creative-biomart.com  Fax: 1-631-938-8127

 45-1 Ramsey Road, Shirley, NY 11967, USA