

# Recombinant Human SLC2A1 Protein, MYC/DDK-tagged, C13 and N15-labeled

Cat. No. SLC2A1-059H Lot. No. (See product label)

## SPECIFICATION

<b>Product Overview</b>	SLC2A1 MS Standard C13 and N15-labeled recombinant protein (NP_006507) with a C-terminal MYC/DDK tag, was expressed in HEK293 cells.
<b>Species</b>	Human
<b>Source</b>	HEK293
<b>Description</b>	This gene encodes a major glucose transporter in the mammalian blood-brain barrier. The encoded protein is found primarily in the cell membrane and on the cell surface, where it can also function as a receptor for human T-cell leukemia virus (HTLV) I and II. Mutations in this gene have been found in a family with paroxysmal exertion-induced dyskinesia.
<b>Molecular Mass</b>	53.9 kDa
<b>AA Sequence</b>	MEPSSKKLTLGRLMLAVGGAVLGSLQFGYNTGVINAPQKVIEEFYNQTTWVHRYGESIL PTTLTTLWLSLSVAIFSVGGMIGSFSVGLFVNRFGRNSMLMMNLLAFVSAVLMGFSK LGKSFEMLILGRFIIGVYCGLTTGFVPMYVGEVSPTALRGALGTLHQLGIVVGILIAQV FGLDSIMGNKDLWPLLLSIIFIPALLQCIVLPFCPEsprfLLINRNEENRAKSVLKKLRG TADVTHDLQEMKEESRQMMREKKVTILELFRSPAYRQPILIAVVLQLSQQLSGINAVF YYSTSIFEKAGVQQPVYATIGSGIVNTAFTVVSLFVVERAGRRTLHLIGLAGMAGCAIL MTIALALLEQLPWMSYLSIVAIFGFVAFFEVGPGPIPWFIWAELFSQGPRPAAIAVAGF SNWTSNFIVGMCFQYVEQLCGPYVFIIFTVLLVLFIFTYFKVPETKGRTFDEIASGFR

Tel: 1-631-559-9269 1-516-512-3133

Email: [info@creative-biomart.com](mailto:info@creative-biomart.com) Fax: 1-631-938-8127

45-1 Ramsey Road, Shirley, NY 11967, USA

QGGASQSDKTPEELFHPLGADSQVTRTRPLEQKLISEEDLAANDILDYKDDDDKV

**Purity** > 80% as determined by SDS-PAGE and Coomassie blue staining

**Stability** Stable for 3 months from receipt of products under proper storage and handling conditions.

**Storage** Store at -80 centigrade. Avoid repeated freeze-thaw cycles.

**Concentration** 50 µg/mL as determined by BCA

**Storage Buffer** 100 mM glycine, 25 mM Tris-HCl, pH 7.3.

## GENE INFORMATION

**Gene Name** [SLC2A1 solute carrier family 2 member 1 \[ Homo sapiens \(human\) \]](#)

**Official Symbol** [SLC2A1](#)

**Synonyms** SLC2A1; solute carrier family 2 member 1; CSE; DYT9; DYT17; DYT18; EIG12; GLUT; GLUT-1; GLUT1; GLUT1DS; HTLVR; PED; SDCHCN; solute carrier family 2, facilitated glucose transporter member 1; choreoathetosis/spasticity, episodic (paroxysmal choreoathetosis/spasticity); glucose transporter type 1, erythrocyte/brain; hepG2 glucose transporter; human T-cell leukemia virus (I and II) receptor; receptor for HTLV-1 and HTLV-2; solute carrier family 2 (facilitated glucose transporter), member 1

**Gene ID** [6513](#)

**mRNA Refseq** [NM\\_006516](#)

 Tel: 1-631-559-9269 1-516-512-3133

 Email: [info@creative-biomart.com](mailto:info@creative-biomart.com)  Fax: 1-631-938-8127

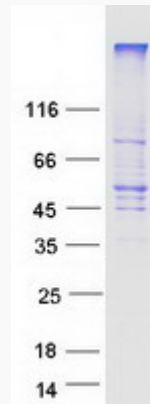
 45-1 Ramsey Road, Shirley, NY 11967, USA

**Protein Refseq** NP\_006507

**MIM** 138140

**UniProt ID** P11166

**SDS-PAGE**



 Tel: 1-631-559-9269 1-516-512-3133

 Email: [info@creative-biomart.com](mailto:info@creative-biomart.com)  Fax: 1-631-938-8127

 45-1 Ramsey Road, Shirley, NY 11967, USA