

Recombinant Human SLC2A1 293 Cell Lysate

Cat. No. SLC2A1-07HCL Lot. No. (See product label)

SPECIFICATION

Product Overview Antigen standard for solute carrier family 2 (facilitated glucose transporter), member 1 (SLC2A1) is a lysate prepared from HEK293T cells transiently transfected with a TrueORF gene-carrying pCMV6-Entry plasmid and then lysed in RIPA Buffer. Protein concentration was determined using a colorimetric assay. The antigen control carries a C-terminal Myc/DDK tag for detection.

Species Human


Source HEK293

Description This gene encodes a major glucose transporter in the mammalian blood-brain barrier. The encoded protein is found primarily in the cell membrane and on the cell surface, where it can also function as a receptor for human T-cell leukemia virus (HTLV) I and II. Mutations in this gene have been found in a family with paroxysmal exertion-induced dyskinesia.

Molecular Mass 53.9 kDa

Storage The lysate is shipped with dry ice. Upon receiving, store the sample at -80 centigrade. Also after dilution, the protein sample should be aliquoted and stored at -80 centigrade for long term storage. Avoid repeated freeze-thaw cycles. Lysate samples can be diluted with 2xSDS Sample Buffer provided. Lysate samples are stable for 12 months from the date of receipt when stored at -80 centigrade.

Preparation HEK293T cells in 10-cm dishes were transiently transfected with MegaTran

 Tel: 1-631-559-9269 1-516-512-3133

 Email: info@creative-biomart.com  Fax: 1-631-938-8127

 45-1 Ramsey Road, Shirley, NY 11967, USA

Transfection Reagent and 5ug TrueORF cDNA plasmid. Transfected cells were cultured for 48hrs before collection. The cells were lysed in modified RIPA buffer (25mM Tris-HCl pH7.6, 150mM NaCl, 1% NP-40, 1mM EDTA, 1xProteinase inhibitor cocktail mix, 1mM PMSF and 1mM Na3VO4), and then centrifuged to clarify the lysate. Protein concentration was measured by BCA kit. Cell lysates were aliquoted and stored at -20 centigrade before shipping.

Components

1 vial of 100 g gene specific transient over-expression cell lysate in RIPA buffer.
 1 vial of 100 g whole HEK293T cell lysate in RIPA buffer.
 1 vial of 250ul 2xSDS Sample Buffer (4% SDS, 125mM Tris-HCl pH6.8, 10% Glycerol, 0.002% Bromophenol blue, 100mM DTT).

GENE INFORMATION

Gene Name [SLC2A1 solute carrier family 2 member 1 \[Homo sapiens \(human\) \]](#)

Official Symbol [SLC2A1](#)

Synonyms CSE; PED; DYT9; GLUT; DYT17; DYT18; EIG12; GLUT1; HTLVR; GLUT-1; SDCHCN; GLUT1DS

Gene ID [6513](#)

mRNA Refseq [NM_006516.4](#)

Protein Refseq [NP_006507.2](#)

MIM [138140](#)

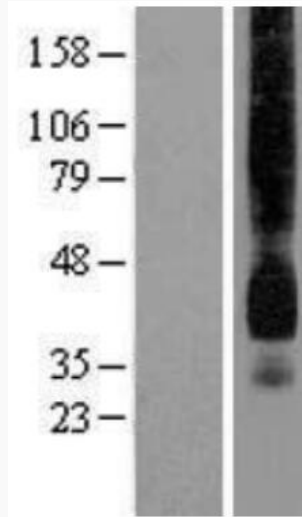
UniProt ID [P11166](#)

 Tel: 1-631-559-9269 1-516-512-3133


 Email: info@creative-biomart.com  Fax: 1-631-938-8127

 45-1 Ramsey Road, Shirley, NY 11967, USA

SDS-PAGE



Western blot validation of overexpression lysate using anti-DDK antibody.

 Tel: 1-631-559-9269 1-516-512-3133

 Email: info@creative-biomart.com  Fax: 1-631-938-8127

 45-1 Ramsey Road, Shirley, NY 11967, USA