

Recombinant Human SLC2A1 protein, His & SUMO-tagged

Cat. No. SLC2A1-1753H Lot. No. (See product label)

SPECIFICATION

Product Overview	Recombinant Human SLC2A1 aa. (Phe409~Asp489) fused with N-terminal His & SUMO tag was produced in E. coli cells.
Species	Human
Source	E.coli
ProteinLength	Phe409~Asp489
Description	This gene encodes a major glucose transporter in the mammalian blood-brain barrier. The encoded protein is found primarily in the cell membrane and on the cell surface, where it can also function as a receptor for human T-cell leukemia virus (HTLV) I and II. Mutations in this gene have been found in a family with paroxysmal exertion-induced dyskinesia.
Form	Freeze-dried powder
Molecular Mass	20kDa as determined by SDS-PAGE reducing conditions.
Endotoxin	<1.0EU per 1ug (determined by the LAL method)
Purity	>95%
Applications	SDS-PAGE; WB; ELISA; IP; CoIP; Reporter Assays; Purification; Amine Reactive Labeling.

 Tel: 1-631-559-9269 1-516-512-3133

 Email: info@creative-biomart.com  Fax: 1-631-938-8127

 45-1 Ramsey Road, Shirley, NY 11967, USA

Stability	The thermal stability is described by the loss rate. The loss rate was determined by accelerated thermal degradation test, that is, incubate the protein at 37°C for 48h, and no obvious degradation and precipitation were observed. The loss rate is less than 5% within the expiration date under appropriate storage condition.
Storage	Avoid repeated freeze/thaw cycles. Store at 2-8°C for one month. Aliquot and store at -80°C for 12 months.
Concentration	200µg/mL
Storage buffer	20mM Tris, 150mM NaCl, pH8.0, containing 1mM EDTA, 1mM DTT, 0.01% sarcosyl, 5%Trehalose and Proclin300.
Reconstitution	Reconstitute in 20mM Tris, 150mM NaCl (pH8.0) to a concentration of 0.1-1.0 mg/mL. Do not vortex.
Isoelectric Point	4.8

GENE INFORMATION

Gene Name	SLC2A1 solute carrier family 2 member 1 [Homo sapiens (human)]
Official Symbol	SLC2A1
Synonyms	SLC2A1; solute carrier family 2 member 1; CSE; PED; DYT9; GLUT; DYT17; DYT18; EIG12; GLUT1; HTLV-1; GLUT-1; SDCHCN; GLUT1DS; solute carrier family 2, facilitated glucose transporter member 1; choreoathetosis/spasticity, episodic (paroxysmal choreoathetosis/spasticity); glucose transporter type 1, erythrocyte/brain; hepG2 glucose transporter; human T-cell leukemia virus (I and II) receptor; receptor for HTLV-1 and HTLV-2; solute carrier family 2 (facilitated glucose transporter), member 1

 Tel: 1-631-559-9269 1-516-512-3133

 Email: info@creative-biomart.com  Fax: 1-631-938-8127

 45-1 Ramsey Road, Shirley, NY 11967, USA

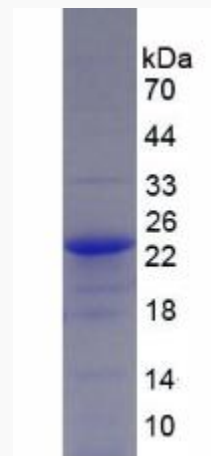
Gene ID 6513

mRNA Refseq NM_006516.2

Protein Refseq NP_006507.2

UniProt ID P11166

SDS-PAGE



Tel: 1-631-559-9269 1-516-512-3133

Email: info@creative-biomart.com Fax: 1-631-938-8127

45-1 Ramsey Road, Shirley, NY 11967, USA