

Recombinant Mouse SLC2A1 protein, His-SUMO-tagged

Cat. No. SLC2A1-3307M Lot. No. (See product label)

SPECIFICATION

Product Overview	Recombinant Mouse SLC2A1 protein(Met251~Glu329), fused with Two N-terminal Tags, His-tag and SUMO-tag, was expressed in E.coli.
Species	Mouse
Source	E.coli
ProteinLength	Met251~Glu329
Form	PBS, pH7.4, containing 0.01% SKL, 1mM DTT, 5% Trehalose and Proclin300.
Molecular Mass	27kDa
Endotoxin	<1.0EU per 1g (determined by the LAL method)
Purity	> 90%
Storage	Avoid repeated freeze/thaw cycles. Store at 2-8°C for one month. Aliquot and store at -80°C for 12 months.
Reconstitution	Reconstitute in 10mM PBS (pH7.4) to a concentration of 0.1-1.0 mg/mL. Do not vortex.

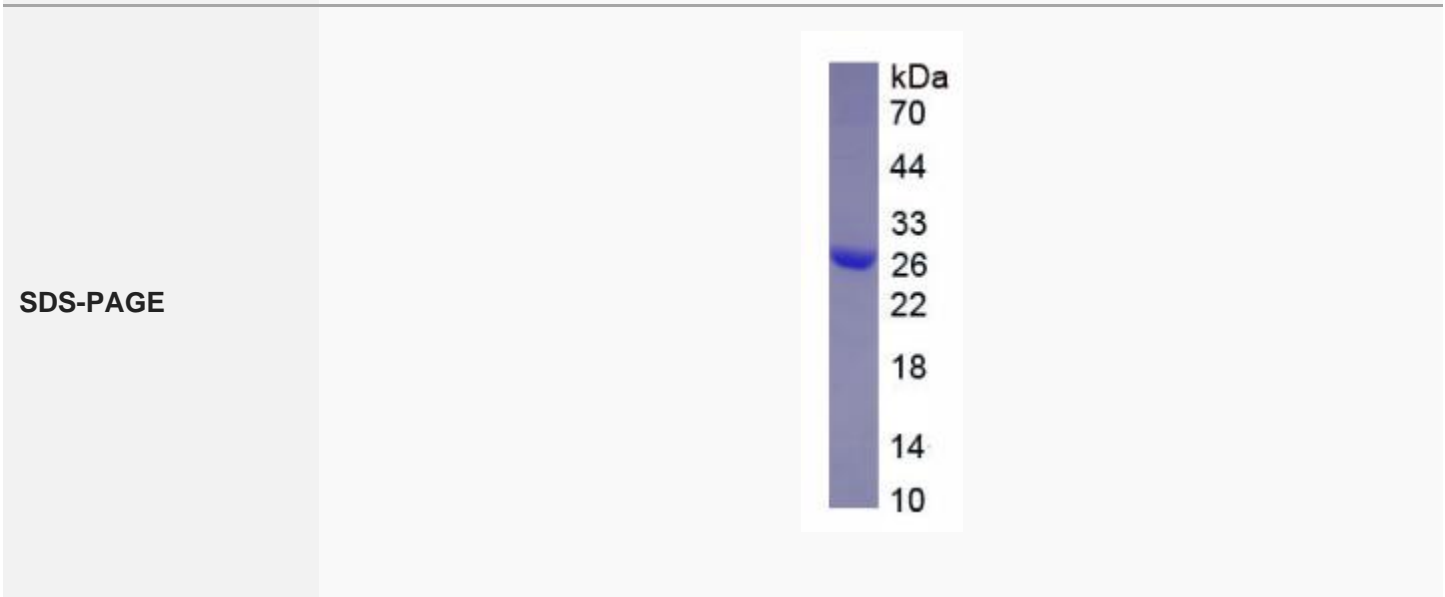
GENE INFORMATION


 Tel: 1-631-559-9269 1-516-512-3133

 Email: info@creative-biomart.com  Fax: 1-631-938-8127

 45-1 Ramsey Road, Shirley, NY 11967, USA

Gene Name	Slc2a1 solute carrier family 2 (facilitated glucose transporter), member 1 [Mus musculus]
Official Symbol	SLC2A1
Synonyms	SLC2A1; solute carrier family 2 (facilitated glucose transporter), member 1; solute carrier family 2, facilitated glucose transporter member 1; GT1; solute carrier family 2, member 1; glucose transporter type 1, erythrocyte/brain; Glut1; Glut-1;
Gene ID	20525
mRNA Refseq	NM_011400
Protein Refseq	NP_035530



 Tel: 1-631-559-9269 1-516-512-3133

 Email: info@creative-biomart.com  Fax: 1-631-938-8127

 45-1 Ramsey Road, Shirley, NY 11967, USA