

Recombinant Human SLC2A1 Protein (Met251-Glu329), N-His tagged

Cat. No. SLC2A1-6302H **Lot. No.** (See product label)

SPECIFICATION

Product Overview	Recombinant human SLC2A1 (Met251-Glu329) fused with the N-His tag was expressed in E. coli.
Species	Human
Source	E.coli
ProteinLength	Met251-Glu329
Form	Lyophilized powder/frozen liquid
Molecular Mass	11.08 kDa
Purity	> 90 % as determined by SDS-PAGE
Notes	For research use only.
Storage	Use a manual defrost freezer and avoid repeated freeze thaw cycles. Store at 2 to 8 centigrade for one week. Store at -20 to -80 centigrade for twelve months from the date of receipt.
Storage Buffer	0.01M PBS, pH 7.4, 0.02 % NLS
Reconstitution	Reconstitute in sterile water for a stock solution.

 Tel: 1-631-559-9269 1-516-512-3133

 Email: info@creative-biomart.com  Fax: 1-631-938-8127

 45-1 Ramsey Road, Shirley, NY 11967, USA

Shipping They are shipped out with dry ice/blue ice unless customers require otherwise.

GENE INFORMATION

Gene Name SLC2A1 solute carrier family 2 member 1 [Homo sapiens (human)]

Official Symbol SLC2A1

Synonyms SLC2A1; solute carrier family 2 (facilitated glucose transporter), member 1; GLUT, GLUT1; solute carrier family 2, facilitated glucose transporter member 1; DYT18; GLUT-1; hepG2 glucose transporter; glucose transporter type 1, erythrocyte/brain; PED; GLUT; DYT17; GLUT1; GLUT1DS; MGC141895; MGC141896;

Gene ID 6513

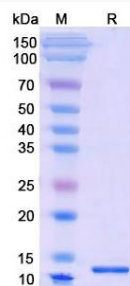
mRNA Refseq NM_006516

Protein Refseq NP_006507

MIM 138140

UniProt ID P11166

SDS-PAGE



 Tel: 1-631-559-9269 1-516-512-3133

 Email: info@creative-biomart.com  Fax: 1-631-938-8127

 45-1 Ramsey Road, Shirley, NY 11967, USA