

## Recombinant Human SLC2A2 protein, His & GST-tagged

Cat. No. SLC2A2-1781H Lot. No. (See product label)

### SPECIFICATION

<b>Product Overview</b>	Recombinant Human SLC2A2 aa. (Cys239~Pro303) fused with N-terminal His & GST tag was produced in E. coli cells.
<b>Species</b>	Human
<b>Source</b>	E.coli
<b>ProteinLength</b>	Cys239~Pro303
<b>Description</b>	This gene encodes an integral plasma membrane glycoprotein of the liver, islet beta cells, intestine, and kidney epithelium. The encoded protein mediates facilitated bidirectional glucose transport. Because of its low affinity for glucose, it has been suggested as a glucose sensor. Mutations in this gene are associated with susceptibility to diseases, including Fanconi-Bickel syndrome and noninsulin-dependent diabetes mellitus (NIDDM). Alternative splicing results in multiple transcript variants of this gene.
<b>Form</b>	Freeze-dried powder
<b>Molecular Mass</b>	40kDa as determined by SDS-PAGE reducing conditions.
<b>Endotoxin</b>	<1.0EU per 1ug (determined by the LAL method)
<b>Purity</b>	>95%

 Tel: 1-631-559-9269 1-516-512-3133

 Email: [info@creative-biomart.com](mailto:info@creative-biomart.com)  Fax: 1-631-938-8127

 45-1 Ramsey Road, Shirley, NY 11967, USA

<b>Applications</b>	Positive Control; Immunogen; SDS-PAGE; WB.
<b>Stability</b>	The thermal stability is described by the loss rate. The loss rate was determined by accelerated thermal degradation test, that is, incubate the protein at 37°C for 48h, and no obvious degradation and precipitation were observed. The loss rate is less than 5% within the expiration date under appropriate storage condition.
<b>Storage</b>	Avoid repeated freeze/thaw cycles. Store at 2-8°C for one month. Aliquot and store at -80°C for 12 months.
<b>Concentration</b>	200µg/mL
<b>Storage buffer</b>	20mM Tris, 150mM NaCl, pH8.0, containing 1mM EDTA, 1mM DTT, 0.01% sarcosyl, 5%Trehalose and Proclin300.
<b>Reconstitution</b>	Reconstitute in 20mM Tris, 150mM NaCl (pH8.0) to a concentration of 0.1-1.0 mg/mL. Do not vortex.
<b>Isoelectric Point</b>	8.1

## GENE INFORMATION

<b>Gene Name</b>	SLC2A2 solute carrier family 2 member 2 [ Homo sapiens (human) ]
<b>Official Symbol</b>	SLC2A2
<b>Synonyms</b>	SLC2A2; solute carrier family 2 member 2; GLUT2; solute carrier family 2, facilitated glucose transporter member 2; glucose transporter type 2, liver; solute carrier family 2 (facilitated glucose transporter), member 2
<b>Gene ID</b>	6514

 Tel: 1-631-559-9269 1-516-512-3133

 Email: [info@creative-biomart.com](mailto:info@creative-biomart.com)  Fax: 1-631-938-8127

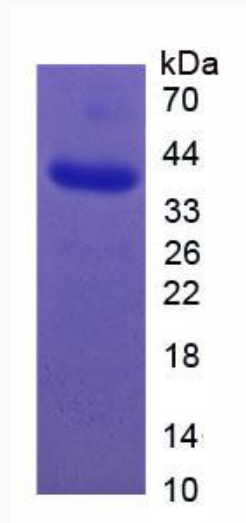
 45-1 Ramsey Road, Shirley, NY 11967, USA

mRNA Refseq [NM\\_000340.1](#)

Protein Refseq [NP\\_000331.1](#)

UniProt ID [P11168](#)

SDS-PAGE



 Tel: 1-631-559-9269 1-516-512-3133

 Email: [info@creative-biomart.com](mailto:info@creative-biomart.com)  Fax: 1-631-938-8127

 45-1 Ramsey Road, Shirley, NY 11967, USA