

Recombinant Human SLC2A3 protein, His-tagged

Cat. No. SLC2A3-1768H Lot. No. (See product label)

SPECIFICATION

Product Overview	Recombinant Human SLC2A3 aa. (Pro206~Pro269) fused with N-terminal His tag was produced in E. coli cells.
Species	Human
Source	E.coli
ProteinLength	Pro206~Pro269
Form	Freeze-dried powder
Molecular Mass	15kDa as determined by SDS-PAGE reducing conditions.
Endotoxin	<1.0EU per 1ug (determined by the LAL method)
Purity	>92%
Applications	SDS-PAGE; WB; ELISA; IP; CoIP; ReporterAssays; Purification; Amine Reactive Labeling.
Stability	The thermal stability is described by the loss rate. The loss rate was determined by accelerated thermal degradation test, that is, incubate the protein at 37°C for 48h, and no obvious degradation and precipitation were observed. The loss rate is less than 5% within the expiration date under appropriate storage condition.

 Tel: 1-631-559-9269 1-516-512-3133

 Email: info@creative-biomart.com  Fax: 1-631-938-8127

 45-1 Ramsey Road, Shirley, NY 11967, USA

Storage	Avoid repeated freeze/thaw cycles. Store at 2-8°C for one month. Aliquot and store at -80°C for 12 months.
Concentration	200µg/mL
Storage buffer	PBS, pH7.4, containing 1mM DTT, 5% trehalose, 0.01% sarcosyl and Proclin300.
Reconstitution	Reconstitute in PBS (pH7.4) to a concentration of 0.1-1.0 mg/mL. Do not vortex.
Isoelectric Point	5.4

GENE INFORMATION

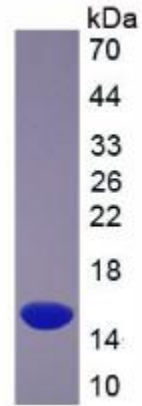
Gene Name	SLC2A3 solute carrier family 2 member 3 [Homo sapiens (human)]
Official Symbol	SLC2A3
Synonyms	SLC2A3; solute carrier family 2 member 3; GLUT3; solute carrier family 2, facilitated glucose transporter member 3; GLUT-3; glucose transporter type 3, brain; solute carrier family 2 (facilitated glucose transporter), member 3
Gene ID	6515
mRNA Refseq	NM_006931.2
Protein Refseq	NP_008862.1
UniProt ID	P11169

 Tel: 1-631-559-9269 1-516-512-3133

 Email: info@creative-biomart.com  Fax: 1-631-938-8127

 45-1 Ramsey Road, Shirley, NY 11967, USA

SDS-PAGE



 Tel: 1-631-559-9269 1-516-512-3133

 Email: info@creative-biomart.com  Fax: 1-631-938-8127

 45-1 Ramsey Road, Shirley, NY 11967, USA