

# Recombinant Human SLC2A3 Protein (Glu207-Gln281), N-GST tagged

Cat. No. SLC2A3-6303H Lot. No. (See product label)

## SPECIFICATION

<b>Product Overview</b>	Recombinant human SLC2A3 (Glu207-Gln281) fused with the N-GST tag was expressed in E. coli.
<b>Species</b>	Human
<b>Source</b>	E.coli
<b>ProteinLength</b>	Glu207-Gln281
<b>Form</b>	Lyophilized powder/frozen liquid
<b>Molecular Mass</b>	35.72 kDa
<b>Purity</b>	> 90 % as determined by SDS-PAGE
<b>Notes</b>	For research use only.
<b>Storage</b>	Use a manual defrost freezer and avoid repeated freeze thaw cycles. Store at 2 to 8 centigrade for one week. Store at -20 to -80 centigrade for twelve months from the date of receipt.
<b>Storage Buffer</b>	0.01M PBS, pH 7.4, 0.02 % NLS
<b>Reconstitution</b>	Reconstitute in sterile water for a stock solution.

 Tel: 1-631-559-9269 1-516-512-3133

 Email: [info@creative-biomart.com](mailto:info@creative-biomart.com)  Fax: 1-631-938-8127

 45-1 Ramsey Road, Shirley, NY 11967, USA

**Shipping**

They are shipped out with dry ice/blue ice unless customers require otherwise.

**GENE INFORMATION**
**Gene Name**

SLC2A3 solute carrier family 2 member 3 [ Homo sapiens (human) ]

**Official Symbol**

SLC2A3

**Synonyms**

SLC2A3; solute carrier family 2 (facilitated glucose transporter), member 3; GLUT3; solute carrier family 2, facilitated glucose transporter member 3; GLUT-3; glucose transporter type 3, brain; FLJ90380;

**Gene ID**

6515

**mRNA Refseq**

NM\_006931

**Protein Refseq**

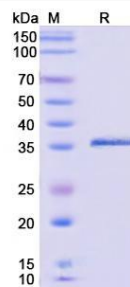
NP\_008862

**MIM**

138170

**UniProt ID**

P11169

**SDS-PAGE**


 Tel: 1-631-559-9269 1-516-512-3133

 Email: [info@creative-biomart.com](mailto:info@creative-biomart.com)  Fax: 1-631-938-8127

 45-1 Ramsey Road, Shirley, NY 11967, USA