

Recombinant Human SLC2A4 Protein, Myc/DDK-tagged, C13 and N15-labeled

Cat. No. SLC2A4-2171H Lot. No. (See product label)

SPECIFICATION

Product Overview

SLC2A4 MS Standard C13 and N15-labeled recombinant protein (NP_001033) with a C-terminal MYC/DDK tag, was expressed in HEK293 cells.

Species

Human

Source

HEK293

Description

This gene is a member of the solute carrier family 2 (facilitated glucose transporter) family and encodes a protein that functions as an insulin-regulated facilitative glucose transporter. In the absence of insulin, this integral membrane protein is sequestered within the cells of muscle and adipose tissue. Within minutes of insulin stimulation, the protein moves to the cell surface and begins to transport glucose across the cell membrane. Mutations in this gene have been associated with noninsulin-dependent diabetes mellitus (NIDDM).

Molecular Mass

54.6 kDa

AA Sequence

MPSGFQQIGSEEDGEPPQQRVTGTLVLAVFSAVLGSLQFGYNIGVINAPQKVIEQSYN
ETWLGRQGPEGPSSIPPGLTTLWALSVAIFSVGGMISSFLIGIISQWLGRKRAMLVN
NVLAVLGGSLMGLANAAASYEMLILGRFLIGAYSGLTSGLVPMYVGEIAPTHLRGALG
TLNQLAIVIGILIAQVLGLESLLGTASLWPLLLGLTVLPALLQLVLLPFCPESPRYLIIQ
NLEGPARKSLKRLTGWADVSGVLAELKDEKRLERERPLSLLQLLGSRTHRQPLIIAV
VLQLSQQLSGINAVFYYSTSIFETAGVGQPAYATIGAGVVNTVFTLVSVLLVERAGR

 Tel: 1-631-559-9269 1-516-512-3133

 Email: info@creative-biomart.com  Fax: 1-631-938-8127

 45-1 Ramsey Road, Shirley, NY 11967, USA

TLHLLGLAGMCGCAILMTVALLLLERVPAMSYVSIVAIFGFVAFFEIGPGPIPWFIVAEL
 FSQGPRPAAMAVAGFSNWTSNFIIGMGFQYVAEAMGPYVFLLFVALLLGGFFIFTFLR
 VPETRGRTFDQISAAFHRTPSLLEQEVKVPSTELEYLGPDENDTRTRPLEQKLISEEDL
 AANDILDYKDDDDKV

Purity > 80% as determined by SDS-PAGE and Coomassie blue staining

Stability Stable for 3 months from receipt of products under proper storage and handling conditions.

Storage Store at -80 centigrade. Avoid repeated freeze-thaw cycles.

Concentration 50 µg/mL as determined by BCA

Storage Buffer 100 mM glycine, 25 mM Tris-HCl, pH 7.3.

GENE INFORMATION

Gene Name SLC2A4 solute carrier family 2 member 4 [Homo sapiens (human)]

Official Symbol SLC2A4

Synonyms SLC2A4; solute carrier family 2 (facilitated glucose transporter), member 4; GLUT4; solute carrier family 2, facilitated glucose transporter member 4; GLUT-4; insulin-responsive glucose transporter type 4; glucose transporter type 4, insulin-responsive;

Gene ID 6517

mRNA Refseq NM_001042

Protein Refseq NP_001033

 Tel: 1-631-559-9269 1-516-512-3133

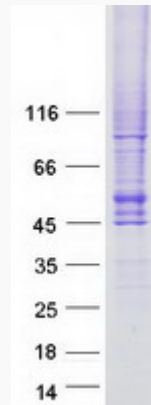
 Email: info@creative-biomart.com  Fax: 1-631-938-8127

 45-1 Ramsey Road, Shirley, NY 11967, USA

MIM 138190

UniProt ID P14672

SDS-PAGE



 Tel: 1-631-559-9269 1-516-512-3133

 Email: info@creative-biomart.com  Fax: 1-631-938-8127

 45-1 Ramsey Road, Shirley, NY 11967, USA