

Recombinant Full Length Human SLC2A4 Protein, C-Flag-tagged

Cat. No. SLC2A4-805HFL **Lot. No.** (See product label)

SPECIFICATION

Product Overview	Recombinant Full Length Human SLC2A4 Protein, fused to Flag-tag at C-terminus, was expressed in Mammalian cells.
Species	Human
Source	Mammalian Cells
Description	This gene is a member of the solute carrier family 2 (facilitated glucose transporter) family and encodes a protein that functions as an insulin-regulated facilitative glucose transporter. In the absence of insulin, this integral membrane protein is sequestered within the cells of muscle and adipose tissue. Within minutes of insulin stimulation, the protein moves to the cell surface and begins to transport glucose across the cell membrane. Mutations in this gene have been associated with noninsulin-dependent diabetes mellitus (NIDDM).
Form	25 mM Tris HCl, pH 7.3, 100 mM glycine, 10% glycerol.
Molecular Mass	54.6 kDa
AA Sequence	MPSGFQQIGSEEDGEPPQQRVTGTLVLAVFSAVLGSLQFGYNIGVINAPQKVIEQSYN ETWLGRQGPEGPS SIPPGLTTLWALSVAIFSVGGMISSFLIGIISQWLGRKRAMLVN NVLAVLGGSLMGLANAAASYEMLIL GRFLIGAYSGLTSGLVPMYVGEIAPTHLRGAL GTLNQLAIVIGILIAQVLGLESLLGTASLWPLLLGLTV LPALLQLVLLPFCPESPRYLYII QNLEGPARKSLKRLTGWADVSGVLAELKDEKRKLERERPLSLLQLLG SRTHRQPLII

 Tel: 1-631-559-9269 1-516-512-3133

 Email: info@creative-biomart.com  Fax: 1-631-938-8127

 45-1 Ramsey Road, Shirley, NY 11967, USA

AVVLQLSQQLSGINAVFYSTSFETAGVGGPAYATIGAGVVNTVFTLVSVLLVERAG
 RR TLHLLGLAGMCGCAILMTVALLLLERVPAMSYVSIVAIFGFVAFFEIGPGPIWFIV
 AELFSQGPRPAAM AVAGFSNWTSNFIIGMGFQYVAEAMGPYVLLFAVLLLGFFIFT
 FLRVPETRGRTFDQISAAFHRTPSLL
 EQEVKPSTELEYLGPDENRTRTRPLEQKLISEEDLAANDILDYKDDDDKV

Purity	> 80% as determined by SDS-PAGE and Coomassie blue staining.
Stability	Stable for 12 months from the date of receipt of the product under proper storage and handling conditions. Avoid repeated freeze-thaw cycles.
Storage	Store at -80 centigrade.
Concentration	>50 ug/mL as determined by microplate BCA method.
Preparation	Recombinant protein was captured through anti-DDK affinity column followed by conventional chromatography steps.
Protein Families	Druggable Genome, Transmembrane
Protein Pathways	Adipocytokine signaling pathway, Insulin signaling pathway, Type II diabetes mellitus
Full Length	Full L.

GENE INFORMATION

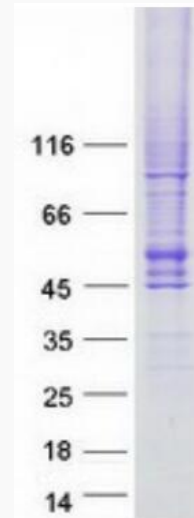
Gene Name	SLC2A4 solute carrier family 2 member 4 [Homo sapiens (human)]
Official Symbol	SLC2A4
Synonyms	GLUT4

 Tel: 1-631-559-9269 1-516-512-3133

 Email: info@creative-biomart.com  Fax: 1-631-938-8127

 45-1 Ramsey Road, Shirley, NY 11967, USA

Gene ID	6517
mRNA Refseq	NM_001042.3
Protein Refseq	NP_001033.1
MIM	138190
UniProt ID	P14672



Coomassie blue staining of purified SLC2A4 protein.

 Tel: 1-631-559-9269 1-516-512-3133

 Email: info@creative-biomart.com  Fax: 1-631-938-8127

 45-1 Ramsey Road, Shirley, NY 11967, USA