

Recombinant Human SLC39A6 protein, His-tagged

Cat. No. SLC39A6-1215H Lot. No. (See product label)

SPECIFICATION

Product Overview	Recombinant Human SLC39A6 aa. (Phe29~Trp325 fused with N-terminal His tag was produced in E. coli cells.
Species	Human
Source	E.coli
ProteinLength	Phe29~Trp325
Description	Zinc is an essential cofactor for hundreds of enzymes. It is involved in protein, nucleic acid, carbohydrate, and lipid metabolism, as well as in the control of gene transcription, growth, development, and differentiation. SLC39A6 belongs to a subfamily of proteins that show structural characteristics of zinc transporters (Taylor and Nicholson, 2003 [PubMed 12659941]).
Form	Freeze-dried powder
Molecular Mass	42kDa as determined by SDS-PAGE reducing conditions.
Endotoxin	<1.0EU per 1g (determined by the LAL method)
Purity	>98%
Characteristic	The isoelectric point is 7.3.

 Tel: 1-631-559-9269 1-516-512-3133

 Email: info@creative-biomart.com  Fax: 1-631-938-8127

 45-1 Ramsey Road, Shirley, NY 11967, USA

Applications	Positive Control; Immunogen; SDS-PAGE; WB.
Stability	The thermal stability is described by the loss rate. The loss rate was determined by accelerated thermal degradation test, that is, incubate the protein at 37°C for 48h, and no obvious degradation and precipitation were observed. The loss rate is less than 5% within the expiration date under appropriate storage condition.
Storage	Avoid repeated freeze/thaw cycles. Store at 2-8°C for one month. Aliquot and store at -80°C for 12 months.
Concentration	200µg/mL
Storage buffer	20mM Tris, 150mM NaCl, pH8.0, containing 1mM EDTA, 1mM DTT, 0.01% sarcosyl, 5% Trehalose and Proclin300.
Reconstitution	Reconstitute in 20mM Tris, 150mM NaCl (pH8.0) to a concentration of 0.1-1.0mg/mL. Do not vortex.

GENE INFORMATION

Gene Name	SLC39A6 solute carrier family 39 member 6 [Homo sapiens (human)]
Official Symbol	SLC39A6
Synonyms	SLC39A6; solute carrier family 39 member 6; ZIP6; LIV-1; zinc transporter ZIP6; LIV-1 protein, estrogen regulated; ZIP-6; estrogen-regulated protein LIV-1; solute carrier family 39 (metal ion transporter), member 6; solute carrier family 39 (zinc transporter), member 6; zrt- and Irt-like protein 6
Gene ID	25800

 Tel: 1-631-559-9269 1-516-512-3133

 Email: info@creative-biomart.com  Fax: 1-631-938-8127

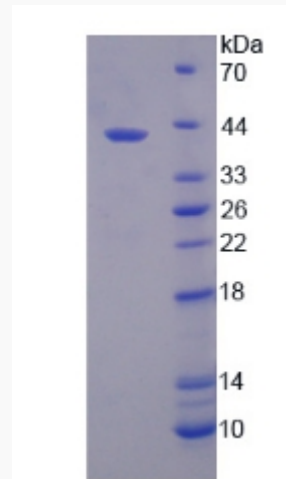
 45-1 Ramsey Road, Shirley, NY 11967, USA

mRNA Refseq [NM_001099406.1](#)

Protein Refseq [NP_001092876.1](#)

UniProt ID [Q13433](#)

SDS-PAGE



 Tel: 1-631-559-9269 1-516-512-3133

 Email: info@creative-biomart.com  Fax: 1-631-938-8127

 45-1 Ramsey Road, Shirley, NY 11967, USA