

Active Recombinant Human SLC39A6 protein, His-tagged

Cat. No. SLC39A6-564H Lot. No. (See product label)

SPECIFICATION

Product Overview	Recombinant Human SLC39A6 protein(Q13433)(29-325aa), fused with C-terminal His tag, was expressed in Insect cells.
Species	Human
Source	Insect cells
ProteinLength	29-325aa
Tag	C-His
Form	Lyophilized from a 0.2 um filtered 20 mM Tris-HCl, 0.5 M NaCl, 6% Trehalose, pH 8.0
Bio-activity	Measured by its binding ability in a functional ELISA. Immobilized Human SLC39A6 at 1 ug/mL can bind Anti- SLC39A6 recombinant antibody, the EC50 is 0.6873-0.9010 ng/mL.
Molecular Mass	35.0 kDa
Endotoxin	Less than 1.0 EU/ug as determined by LAL method.
Purity	Greater than 95% as determined by SDS-PAGE.
Storage	Store at -20°C/-80°C upon receipt, aliquoting is necessary for mutiple use. Avoid repeated freeze-thaw cycles.

 Tel: 1-631-559-9269 1-516-512-3133

 Email: info@creative-biomart.com  Fax: 1-631-938-8127

 45-1 Ramsey Road, Shirley, NY 11967, USA

Reconstitution

We recommend that this vial be briefly centrifuged prior to opening to bring the contents to the bottom. Please reconstitute protein in deionized sterile water to a concentration of 0.1-1.0 mg/mL. We recommend to add 5-50% of glycerol (final concentration) and aliquot for long-term storage at -20°C/-80°C.

AA Sequence

FPQTTEKISPNWESGINVDLAISTRQYHLQQLFYRYGENNSLSVEGFRKLLQNIQIDKI
 KRIHIHHDHHDHSDHEHHSDHERHSDHEHHSEHEHHSDHDHSHHNHAASGKNKR
 KALCPDHSDSDSSGKDPRNSQGKGAHRPEHASGRRNVKDSVSASEVTSTVYNTVSE
 GTHFLETIETPRPGKLFPKDVSSSTPPSVTSKSRVSRLAGRKTNESVSEPRKGFMY
 RNTNENPQECFNASKLLTSHGMGIQVPLNATEFNLYLCPAIIINQIDARSCLIHTSEKKA
 EIPPKTYSLQIAW

GENE INFORMATION

Gene Name [SLC39A6 solute carrier family 39 \(zinc transporter\), member 6 \[Homo sapiens \]](#)

Official Symbol [SLC39A6](#)

Synonyms [LIV-1](#)

Gene ID [25800](#)

mRNA Refseq [NM_012319.3](#)

Protein Refseq [NP_036451.3](#)

MIM [608731](#)

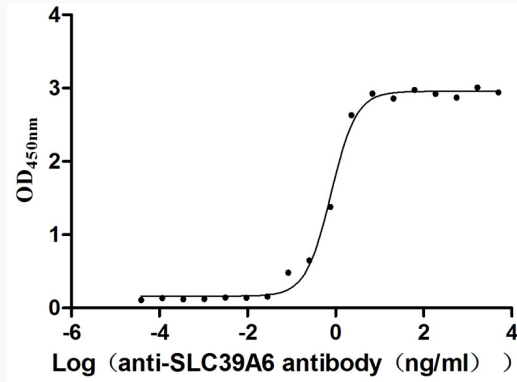
UniProt ID [Q13433](#)

 Tel: 1-631-559-9269 1-516-512-3133

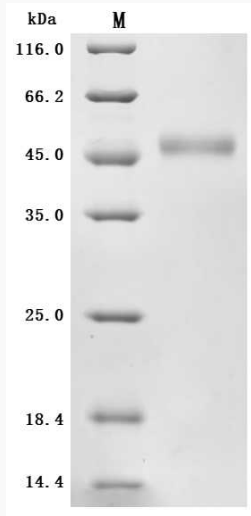
 Email: info@creative-biomart.com  Fax: 1-631-938-8127

 45-1 Ramsey Road, Shirley, NY 11967, USA

Activity



SDS-PAGE



 Tel: 1-631-559-9269 1-516-512-3133

 Email: info@creative-biomart.com  Fax: 1-631-938-8127

 45-1 Ramsey Road, Shirley, NY 11967, USA