

Recombinant Human SLC39A6 Protein (Lys445-Gln656), N-His tagged

Cat. No. SLC39A6-5791H Lot. No. (See product label)

SPECIFICATION

Product Overview	Recombinant human SLC39A6 (Lys445-Gln656) fused with the N-His tag was expressed in E. coli.
Species	Human
Source	E.coli
ProteinLength	Lys445-Gln656
Form	Lyophilized powder/frozen liquid
Molecular Mass	26.51 kDa
Purity	> 90 % as determined by SDS-PAGE
Notes	For research use only.
Storage	Use a manual defrost freezer and avoid repeated freeze thaw cycles. Store at 2 to 8 centigrade for one week. Store at -20 to -80 centigrade for twelve months from the date of receipt.
Storage Buffer	0.01M PBS, pH 7.4, 0.02 % NLS
Reconstitution	Reconstitute in sterile water for a stock solution.

 Tel: 1-631-559-9269 1-516-512-3133

 Email: info@creative-biomart.com  Fax: 1-631-938-8127

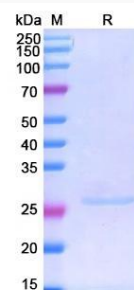
 45-1 Ramsey Road, Shirley, NY 11967, USA

Shipping

They are shipped out with dry ice/blue ice unless customers require otherwise.

GENE INFORMATION

Gene Name	SLC39A6 solute carrier family 39 (zinc transporter), member 6 [Homo sapiens (human)]
Official Symbol	SLC39A6
Synonyms	LIV-1
Gene ID	25800
mRNA Refseq	NM_012319
Protein Refseq	NP_036451
MIM	608731
UniProt ID	Q13433

SDS-PAGE


 Tel: 1-631-559-9269 1-516-512-3133

 Email: info@creative-biomart.com  Fax: 1-631-938-8127

 45-1 Ramsey Road, Shirley, NY 11967, USA