

## Recombinant Human SLC3A2 Protein, His-tagged

Cat. No. SLC3A2-229H Lot. No. (See product label)

### SPECIFICATION

<b>Product Overview</b>	Recombinant Human SLC3A2(206-630aa) fused with His tag at C-terminal was expressed in Insect cells.
<b>Species</b>	Human
<b>Source</b>	Insect Cells
<b>ProteinLength</b>	206-630aa
<b>Description</b>	SLC3A2, also known as 4F2 cell-surface antigen heavy chain isoform c, is a single-pass type I I membrane protein which belongs to the SLC3A transporter family. It is expressed ubiquitously in all tissues tested with highest levels detected in kidney, placenta and testis and weakest level in thymus. This protein is required for the function of light chain amino-acid transporters and also involved in sodium-independent, high-affinity transport of large neutral amino acids such as phenylalanine, tyrosine, leucine, arginine and tryptophan. This protein involved in guiding and targeting of LAT1 and LAT2 to the plasma membrane.
<b>Form</b>	Liquid. In Phosphate Buffered Saline (pH 7.4) containing 10% glycerol.
<b>Molecular Mass</b>	47.9kDa (434aa) 40-57kDa (SDS-PAGE under reducing conditions)
<b>AA Sequence</b>	ADPRAPRCRE LPAQKWWHTG ALYRIGDLQA FQGHGAGNLA GLKGRLDYLS SLKVKGLVLG PIHKNQKDDV AQTDLLQIDP NFGSKEDFDS LLQSAKKKSI RVILDLPNY RGENSWFSTQ VDTVATKVKD ALEFWLQAGV

 Tel: 1-631-559-9269 1-516-512-3133

 Email: [info@creative-biomart.com](mailto:info@creative-biomart.com)  Fax: 1-631-938-8127

 45-1 Ramsey Road, Shirley, NY 11967, USA

DGFQVRDIEN LKDASSFLAE WQNITKGFSE DRLLIAGTNS  
 SDLQQILSLL ESNKDLLLTS SYLSDSGSTG EHTKSLVTQY LNATGNRWCS  
 WSLSQARLLT SFLPAQLLRL YQLMLFTLPG TPVFSYGDEI  
 GLDAAALPGQ PMEAPVMLWD ESSFPDIPGA VSANMTVKGQ SEDPGSLLSL  
 FRRLSDQRSK ERSLLHGDFH AFSAGPGLFS YIRHWDQNER  
 FLVVLNFGDV GLSAGLQASD LPASASLPK ADLLLSTQPG REEGSPLELE  
 RLKLEPHEGL LLRFPYAAHH HHHH

**Purity** > 95% by SDS - PAGE

**Applications** SDS-PAGE

**Storage** Can be stored at +4 centigrade short term (1-2 weeks). For long term storage, aliquot and store at -20 centigrade or -70 centigrade. Avoid repeated freezing and thawing cycles.

**Concentration** 0.5 mg/ml (determined by Absorbance at 280)

## GENE INFORMATION

**Gene Name** [SLC3A2 solute carrier family 3 \(activators of dibasic and neutral amino acid transport\), member 2 \[ Homo sapiens \]](#)

**Official Symbol** [SLC3A2](#)

**Synonyms** SLC3A2; solute carrier family 3 (activators of dibasic and neutral amino acid transport), member 2; MDU1; 4F2 cell-surface antigen heavy chain; 4F2; 4F2 cell surface antigen heavy chain; 4F2 heavy chain; 4F2HC; 4T2HC; antigen defined by monoclonal 4F2; antigen identified by monoclonal antibodies 4F2; TRA1.10; TROP4; and T43; CD98; CD98 heavy chain; CD98HC; heavy chain; lymphocyte activation antigen 4F2 large subunit; monoclonal 44D7; NACAE; antigen defined by monoclonal

 Tel: 1-631-559-9269 1-516-512-3133

 Email: [info@creative-biomart.com](mailto:info@creative-biomart.com)  Fax: 1-631-938-8127

 45-1 Ramsey Road, Shirley, NY 11967, USA

4F2, heavy chain; antigen identified by monoclonal antibodies 4F2, TRA1.10, TROP4, and T43;

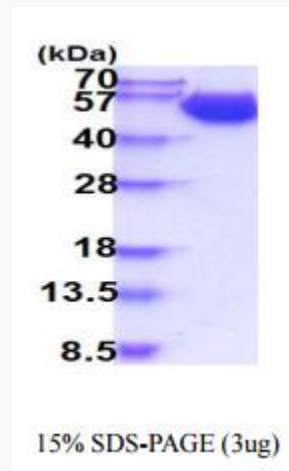
**Gene ID** 6520

**mRNA Refseq** NM\_002394

**Protein Refseq** NP\_002385

**MIM** 158070

**UniProt ID** P08195



 Tel: 1-631-559-9269 1-516-512-3133

 Email: [info@creative-biomart.com](mailto:info@creative-biomart.com)  Fax: 1-631-938-8127

 45-1 Ramsey Road, Shirley, NY 11967, USA