

# Recombinant Human SLC3A2 Protein, Myc/DDK-tagged, C13 and N15-labeled

Cat. No. SLC3A2-2328H Lot. No. (See product label)

## SPECIFICATION

### Product Overview

SLC3A2 MS Standard C13 and N15-labeled recombinant protein (NP\_001012682) with a C-terminal MYC/DDK tag, was expressed in HEK293 cells.

### Species

Human

### Source

HEK293

### Description

This gene is a member of the solute carrier family and encodes a cell surface, transmembrane protein. The protein exists as the heavy chain of a heterodimer, covalently bound through di-sulfide bonds to one of several possible light chains. The encoded transporter plays a role in regulation of intracellular calcium levels and transports L-type amino acids. Alternatively spliced transcript variants, encoding different isoforms, have been characterized.

### Molecular Mass

61.8 kDa

### AA Sequence

MELQPPEASIAVVSIPRQLPGSHSEAGVQGLSAGDDSGTMSQDTEVDMKEVELNEL  
EPEKQPMNAASGAAMSLAGAEKNGLVKIKVAEDEAEAAAAAKFTGLSKEELLKVAG  
SPGWVTRRWALLLFWLWLGMLAGAVVIVRAPRCRELPAQKWWHTGALYRIGDL  
QAFQGHGAGNLAGLKGRLDYLSLKVKGLVLPPIHKNQKDDVAQTDLLQIDPNFGS  
KEDFDSLLQSAAKKSIRVILDLTTPNYRGENSWFSTQVDTVATKVKDALEFWLQAGVD  
GFQVRDIENLKDASSFLAEWQNITKGFSEDRLLIAGTNSSDLQQILSLLSNKDLLLTS  
SYLSDSGSTGEHTKSLVTQYLNATGNRWCSWSLSQARLLTSFLPAQLLRLYQLMLF

 Tel: 1-631-559-9269 1-516-512-3133

 Email: [info@creative-biomart.com](mailto:info@creative-biomart.com)  Fax: 1-631-938-8127

 45-1 Ramsey Road, Shirley, NY 11967, USA

TLPGTPVFSYGDEIGLDAAALPGQPMEAPVMLWDESSFPDIPGAVSANMTVKGQSE  
 DPGSLLSLFRRLSDQRSKERSLLHGDFHAFSAGPGLFSYIRHWDQNERFLVVLNFG  
 DVGLSAGLQASDLPASASLPKADLLLSTQPGREEGSPLELERLKLEPHEGLLLRFP  
 YAASGPTRTRPLEQKLISEEDLAANDILDYKDDDDKV

**Purity** > 80% as determined by SDS-PAGE and Coomassie blue staining

**Stability** Stable for 3 months from receipt of products under proper storage and handling conditions.

**Storage** Store at -80 centigrade. Avoid repeated freeze-thaw cycles.

**Concentration** 50 µg/mL as determined by BCA

**Storage Buffer** 100 mM glycine, 25 mM Tris-HCl, pH 7.3.

## GENE INFORMATION

**Gene Name** [SLC3A2 solute carrier family 3 member 2 \[ Homo sapiens \(human\) \]](#)

**Official Symbol** [SLC3A2](#)

**Synonyms** SLC3A2; solute carrier family 3 (activators of dibasic and neutral amino acid transport), member 2; MDU1; 4F2 cell-surface antigen heavy chain; 4F2; 4F2 cell surface antigen heavy chain; 4F2 heavy chain; 4F2HC; 4T2HC; antigen defined by monoclonal 4F2; antigen identified by monoclonal antibodies 4F2; TRA1.10; TROP4; and T43; CD98; CD98 heavy chain; CD98HC; heavy chain; lymphocyte activation antigen 4F2 large subunit; monoclonal 44D7; NACAE; antigen defined by monoclonal 4F2, heavy chain; antigen identified by monoclonal antibodies 4F2, TRA1.10, TROP4, and T43;

 Tel: 1-631-559-9269 1-516-512-3133

 Email: [info@creative-biomart.com](mailto:info@creative-biomart.com)  Fax: 1-631-938-8127

 45-1 Ramsey Road, Shirley, NY 11967, USA

**Gene ID** 6520

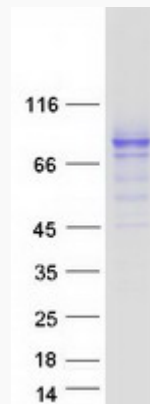
**mRNA Refseq** NM\_001012664


**Protein Refseq** NP\_001012682

**MIM** 158070

**UniProt ID** P08195

**SDS-PAGE**



 Tel: 1-631-559-9269 1-516-512-3133

 Email: [info@creative-biomart.com](mailto:info@creative-biomart.com)  Fax: 1-631-938-8127

 45-1 Ramsey Road, Shirley, NY 11967, USA