

Active Recombinant Human SLC3A2 protein

Cat. No. SLC3A2-2568H Lot. No. (See product label)

SPECIFICATION

Product Overview	Recombinant Human SLC3A2/CD98 Protein is produced by insect cell-baculovirus expression system. The target protein is expressed with sequence (Arg206-Ala630) of human SLC3A2 (Accession #NP_002385.3).
Species	Human
Source	Sf9 Cells
ProteinLength	Arg206-Ala630
Form	Lyophilized from a 0.22 µm filtered solution of PBS, pH 7.4.
Bio-activity	Measured by its binding ability in a functional ELISA. Immobilized Human SLC3A2 Protein at 5 µg/mL (100 µL/well) can bind ITGB1 with a linear range of 0.0195-1.216 µg/mL.
Molecular Mass	45 kDa
Endotoxin	< 0.1 EU/µg of the protein by LAL method.
Purity	> 97% by SDS-PAGE.
Storage	Store the lyophilized protein at -20°C to -80 °C for long term. After reconstitution, the protein solution is stable at -20 °C for 3 months, at 2-8 °C for up to 1 week.

 Tel: 1-631-559-9269 1-516-512-3133

 Email: info@creative-biomart.com  Fax: 1-631-938-8127

 45-1 Ramsey Road, Shirley, NY 11967, USA

Reconstitution Reconstitute to a concentration of 0.1-0.5 mg/mL in sterile distilled water.

GENE INFORMATION

Gene Name SLC3A2 solute carrier family 3 (activators of dibasic and neutral amino acid transport), member 2 [Homo sapiens]

Official Symbol SLC3A2

Synonyms SLC3A2; solute carrier family 3 (activators of dibasic and neutral amino acid transport), member 2; MDU1; 4F2 cell-surface antigen heavy chain; 4F2; 4F2 cell surface antigen heavy chain; 4F2 heavy chain; 4F2HC; 4T2HC; antigen defined by monoclonal 4F2; antigen identified by monoclonal antibodies 4F2; TRA1.10; TROP4; and T43; CD98; CD98 heavy chain; CD98HC; heavy chain; lymphocyte activation antigen 4F2 large subunit; monoclonal 44D7; NACAE; antigen defined by monoclonal 4F2, heavy chain; antigen identified by monoclonal antibodies 4F2, TRA1.10, TROP4, and T43;

Gene ID 6520

mRNA Refseq NM_001012662

Protein Refseq NP_001012680

MIM 158070

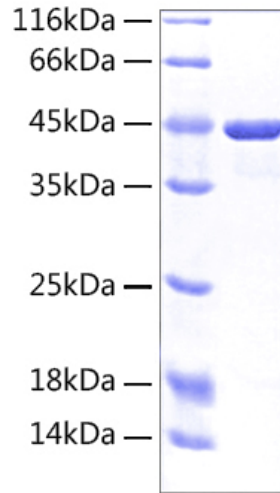
UniProt ID P08195

 Tel: 1-631-559-9269 1-516-512-3133

 Email: info@creative-biomart.com  Fax: 1-631-938-8127

 45-1 Ramsey Road, Shirley, NY 11967, USA

SDS-PAGE



 Tel: 1-631-559-9269 1-516-512-3133

 Email: info@creative-biomart.com  Fax: 1-631-938-8127

 45-1 Ramsey Road, Shirley, NY 11967, USA