

Recombinant Human SLC3A2 protein, rFc-tagged

Cat. No. SLC3A2-3759H Lot. No. (See product label)

SPECIFICATION

Product Overview	Recombinant Human SLC3A2 protein(P08195-1)(Arg206-Ala630), fused with N-terminal rFc tag, was expressed in HEK293.
Species	Human
Source	HEK293
Form	Lyophilized from 0.22 µm filtered solution in PBS, pH 7.4. Normally 5% trehalose and 5% mannitol are added as protectants before lyophilization.
Molecular Mass	74.0 kDa
Endotoxin	<0.1 EU/µg protein, LAL method
Purity	>90 %, SDS-PAGE
Storage	It is recommended that the protein be aliquoted for optimal storage. Avoid repeated freeze-thaw cycles. Until expiry date, -20°C to -80°C as lyophilized proteins. 3 months, -20°C to -80°C under sterile conditions after reconstitution.
Reconstitution	Briefly centrifuge the tube before opening. Reconstitute at 0.1-0.5 mg/mL in sterile water.

GENE INFORMATION

 Tel: 1-631-559-9269 1-516-512-3133

 Email: info@creative-biomart.com  Fax: 1-631-938-8127

 45-1 Ramsey Road, Shirley, NY 11967, USA

Gene Name	SLC3A2 solute carrier family 3 (activators of dibasic and neutral amino acid transport), member 2 [Homo sapiens]
Official Symbol	SLC3A2
Synonyms	SLC3A2; solute carrier family 3 (activators of dibasic and neutral amino acid transport), member 2; MDU1; 4F2 cell-surface antigen heavy chain; 4F2; 4F2 cell surface antigen heavy chain; 4F2 heavy chain; 4F2HC; 4T2HC; antigen defined by monoclonal 4F2; antigen identified by monoclonal antibodies 4F2; TRA1.10; TROP4; and T43; CD98; CD98 heavy chain; CD98HC; heavy chain; lymphocyte activation antigen 4F2 large subunit; monoclonal 44D7; NACAE; antigen defined by monoclonal 4F2, heavy chain; antigen identified by monoclonal antibodies 4F2, TRA1.10, TROP4, and T43;
Gene ID	6520
mRNA Refseq	NM_001012662
Protein Refseq	NP_001012680
MIM	158070
UniProt ID	P08195

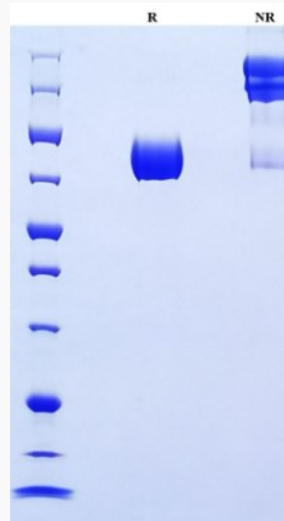
 Tel: 1-631-559-9269 1-516-512-3133

 Email: info@creative-biomart.com  Fax: 1-631-938-8127

 45-1 Ramsey Road, Shirley, NY 11967, USA



SDS-PAGE



Tel: 1-631-559-9269 1-516-512-3133

Email: info@creative-biomart.com Fax: 1-631-938-8127

45-1 Ramsey Road, Shirley, NY 11967, USA