

Recombinant Human SLC3A2 protein, His-tagged

Cat. No. SLC3A2-3960H Lot. No. (See product label)

SPECIFICATION

Product Overview	Recombinant Human SLC3A2 protein(AAH01061)(Arg206-Ala630), fused with N-terminal His tag, was expressed in HEK293.
Species	Human
Source	HEK293
ProteinLength	Arg206-Ala630
Tag	N-His
Form	Lyophilized from 0.22µm filtered solution in PBS (pH 7.4). Normally 5% trehalose is added as protectant before lyophilization.
Bio-activity	Immobilized Human CD98, His Tag at 0.5µg/ml (100µl/well) on the plate. Dose response curve for Anti-CD98 Antibody, hFc Tag with the EC50 of 10.1ng/ml determined by ELISA.
Molecular Mass	The protein has a predicted MW of 47.9 kDa. Due to glycosylation, the protein migrates to 60-70 kDa based on Tris-Bis PAGE result.
Endotoxin	Less than 1EU per µg by the LAL method.
Purity	> 95% as determined by Tris-Bis PAGE; > 95% as determined by HPLC

 Tel: 1-631-559-9269 1-516-512-3133

 Email: info@creative-biomart.com  Fax: 1-631-938-8127

 45-1 Ramsey Road, Shirley, NY 11967, USA

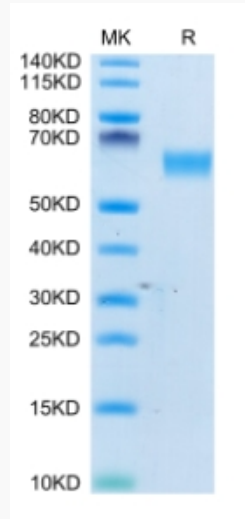
Storage	Reconstituted protein stable at -80°C for 12 months, 4°C for 1 week. Use a manual defrost freezer and avoid repeated freeze-thaw cycles.
Reconstitution	Centrifuge tubes before opening. Reconstituting to a concentration more than 100 µg/ml is recommended. Dissolve the lyophilized protein in distilled water.
GENE INFORMATION	
Gene Name	SLC3A2 solute carrier family 3 (activators of dibasic and neutral amino acid transport), member 2 [Homo sapiens]
Official Symbol	SLC3A2
Synonyms	SLC3A2; solute carrier family 3 (activators of dibasic and neutral amino acid transport), member 2; MDU1; 4F2 cell-surface antigen heavy chain; 4F2; 4F2 cell surface antigen heavy chain; 4F2 heavy chain; 4F2HC; 4T2HC; antigen defined by monoclonal 4F2; antigen identified by monoclonal antibodies 4F2; TRA1.10; TROP4; and T43; CD98; CD98 heavy chain; CD98HC; heavy chain; lymphocyte activation antigen 4F2 large subunit; monoclonal 44D7; NACAE; antigen defined by monoclonal 4F2, heavy chain; antigen identified by monoclonal antibodies 4F2, TRA1.10, TROP4, and T43;
Gene ID	6520
mRNA Refseq	NM_001012662
Protein Refseq	NP_001012680
MIM	158070
UniProt ID	P08195

 Tel: 1-631-559-9269 1-516-512-3133

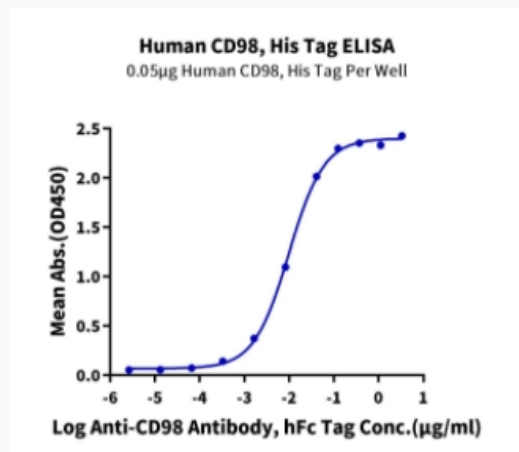
 Email: info@creative-biomart.com  Fax: 1-631-938-8127

 45-1 Ramsey Road, Shirley, NY 11967, USA

Tris-Bis PAGE



ELISA Data



 Tel: 1-631-559-9269 1-516-512-3133

 Email: info@creative-biomart.com  Fax: 1-631-938-8127

 45-1 Ramsey Road, Shirley, NY 11967, USA