

Recombinant Human SLC3A2 Protein (Arg206-Ala630), N-His tagged

Cat. No. SLC3A2-5106H **Lot. No.** (See product label)

SPECIFICATION

Product Overview	Recombinant human SLC3A2 (Arg206-Ala630) fused with the N-terminal His tag was expressed in Mammalian cells.
Species	Human
Source	Mammalian Cells
ProteinLength	Arg206-Ala630
Form	Lyophilized powder/frozen liquid
Molecular Mass	46.86 kDa
Endotoxin	< 1.0 EU/μg of the protein as determined by the LAL method.
Purity	>90% as determined by SDS-PAGE.
Notes	For research use only.
Storage	Use a manual defrost freezer and avoid repeated freeze thaw cycles. Store at 2 to 8 centigrade for one week. Store at -20 to -80 centigrade for twelve months from the date of receipt.
Storage Buffer	Supplied as solution form in PBS, pH 7.5 or lyophilized from PBS, pH 7.5.

 Tel: 1-631-559-9269 1-516-512-3133

 Email: info@creative-biomart.com  Fax: 1-631-938-8127

 45-1 Ramsey Road, Shirley, NY 11967, USA

Reconstitution Reconstitute in sterile water for a stock solution.

Shipping They are shipped out with dry ice/blue ice unless customers require otherwise.

GENE INFORMATION

Gene Name SLC3A2 solute carrier family 3 (activators of dibasic and neutral amino acid transport), member 2 [Homo sapiens (human)]

Official Symbol SLC3A2

Synonyms SLC3A2; solute carrier family 3 (activators of dibasic and neutral amino acid transport), member 2; MDU1; 4F2 cell-surface antigen heavy chain; 4F2; 4F2 cell surface antigen heavy chain; 4F2 heavy chain; 4F2HC; 4T2HC; antigen defined by monoclonal 4F2; antigen identified by monoclonal antibodies 4F2; TRA1.10; TROP4; and T43; CD98; CD98 heavy chain; CD98HC; heavy chain; lymphocyte activation antigen 4F2 large subunit; monoclonal 44D7; NACAE; antigen defined by monoclonal 4F2, heavy chain; antigen identified by monoclonal antibodies 4F2, TRA1.10, TROP4, and T43;

Gene ID 6520

mRNA Refseq NM_001012662

Protein Refseq NP_001012680

MIM 158070

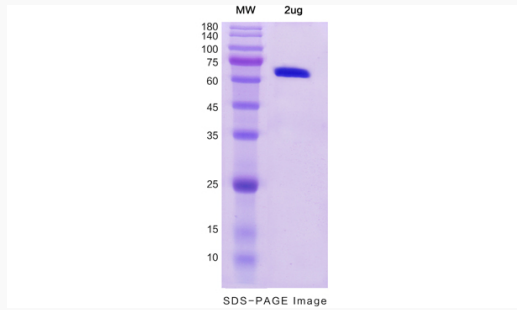
UniProt ID P08195

 Tel: 1-631-559-9269 1-516-512-3133

 Email: info@creative-biomart.com  Fax: 1-631-938-8127

 45-1 Ramsey Road, Shirley, NY 11967, USA

SDS-PAGE



 Tel: 1-631-559-9269 1-516-512-3133

 Email: info@creative-biomart.com  Fax: 1-631-938-8127

 45-1 Ramsey Road, Shirley, NY 11967, USA