

## Recombinant Human SLC43A2 Protein, GST-tagged

Cat. No. SLC43A2-674H Lot. No. (See product label)

### SPECIFICATION

<b>Product Overview</b>	Recombinant Human SLC43A2 Full-Length ORF Protein (1-569 aa) is produced by Wheat Germ (in vitro) expression system. This protein is fused with a GST tag at the N-terminal.
<b>Species</b>	Human
<b>Source</b>	Wheat Germ
<b>ProteinLength</b>	1-569 aa
<b>Description</b>	System L amino acid transporters, such as SLC43A2, mediate sodium-independent transport of bulky neutral amino acids across cell membranes (Bodoy et al., 2005 [PubMed 15659399]).
<b>Form</b>	50 mM Tris-HCl, 10 mM reduced Glutathione, pH=8.0 in the elution buffer.
<b>Molecular Mass</b>	89.1 kDa
<b>AA Sequence</b>	<p>MAPTLATAHRRRWWMACTAVLENLLFSAVLLGWGSELLIMLKSEGFYSYLCTEPENV  TNGTVGGTAEPGHEEVSWMNGWLSCQAQDEMLNLAFTVGSFLLSAITPLGIVMDK  YGPRKLRLLLGSACFAVSCLLIAYGASKPNALSVLIFIALALNGFGGMCMFTFTSLTLPN  MFGDLRSTFIALMIGSYASSAVTFPGIKLIYDAGVSFIVLVVWAGCSGLVFLNCFN  WPLEPFPGPEDMDYSVKIKFSWLGFDPKITGKQFYKQVTTVGRRLSVGSSMRSACE  QVALQEGHKLCLSTVDLEVKCQPDAAVAPSPFMHSVFSPILLLSLVTMCVTQLRLIFYM  GAMNNILKFLVSGDQKTVGLYTSIFGVLQLLCLLTAPVIGYIMDWRLKECEDASEEPE</p>

 Tel: 1-631-559-9269 1-516-512-3133

 Email: [info@creative-biomart.com](mailto:info@creative-biomart.com)  Fax: 1-631-938-8127

 45-1 Ramsey Road, Shirley, NY 11967, USA

EKDANQGEKKKKRDRQIQKITNAMRAFAFTNLLLVGFGVTCLIPNLPLQILSFILHTIV  
 RGFHSAVGGLYAAVYPSTQFGSLTGLQSLISALFALLQQPLFLAMMGPLQGDPLWV  
 NVGLLLLSLLGFCLPLYLICYRRQLERQLQQRQEDDKLFLKINGSSNQAEFV

**Applications**

Enzyme-linked Immunoabsorbent Assay; Western Blot (Recombinant protein);  
 Antibody Production; Protein Array

**Notes**

Best use within three months from the date of receipt of this protein

**Storage**

Store at -80 centigrade. Aliquot to avoid repeated freezing and thawing.

## GENE INFORMATION

**Gene Name**

[SLC43A2 solute carrier family 43, member 2 \[ Homo sapiens \]](#)

**Official Symbol**

[SLC43A2](#)

**Synonyms**

SLC43A2; MGC34680; LAT4; FLJ23848;

**Gene ID**

[124935](#)

**mRNA Refseq**

[NM\\_152346](#)

**Protein Refseq**

[NP\\_689559](#)

**MIM**

[610791](#)

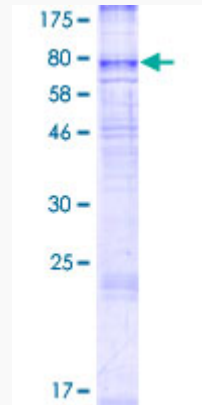
**UniProt ID**

[Q8N370](#)

 Tel: 1-631-559-9269 1-516-512-3133

 Email: [info@creative-biomart.com](mailto:info@creative-biomart.com)  Fax: 1-631-938-8127

 45-1 Ramsey Road, Shirley, NY 11967, USA



12.5% SDS-PAGE Stained with Coomassie Blue.

Tel: 1-631-559-9269 1-516-512-3133

Email: [info@creative-biomart.com](mailto:info@creative-biomart.com) Fax: 1-631-938-8127

45-1 Ramsey Road, Shirley, NY 11967, USA