

Recombinant Human SLC4A1 Protein (Ala35-Ser290), N-His tagged

Cat. No. SLC4A1-0706H Lot. No. (See product label)

SPECIFICATION

Product Overview	Recombinant Human CD233/SLC4A1 (Ala35-Ser290) fused with the N-His tag was expressed in E. coli.
Species	Human
Source	E.coli
ProteinLength	Ala35-Ser290
Form	Lyophilized powder/frozen liquid
Molecular Mass	30.72 kDa
Purity	>90% as determined by SDS-PAGE.
Notes	For research use only.
Storage	Use a manual defrost freezer and avoid repeated freeze thaw cycles. Store at 2 to 8 centigrade for one week. Store at -20 to -80 centigrade for twelve months from the date of receipt.
Storage Buffer	0.01M PBS, pH 7.4, 0.02% NLS
Reconstitution	Reconstitute in sterile water for a stock solution.

 Tel: 1-631-559-9269 1-516-512-3133

 Email: info@creative-biomart.com  Fax: 1-631-938-8127

 45-1 Ramsey Road, Shirley, NY 11967, USA

Shipping They are shipped out with dry ice/blue ice unless customers require otherwise.

GENE INFORMATION

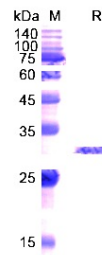
Gene Name	SLC4A1 solute carrier family 4, anion exchanger, member 1 (erythrocyte membrane protein band 3, Diego blood group) [Homo sapiens (human)]
Official Symbol	SLC4A1
Synonyms	SLC4A1; solute carrier family 4, anion exchanger, member 1 (erythrocyte membrane protein band 3, Diego blood group); AE1, DI, EPB3, Waldner blood group, WD; band 3 anion transport protein; CD233; FR; Froese blood group; RTA1A; SW; Swann blood group; WR; Wright blood group; anion exchanger 1; anion exchanger-1; Waldner blood group; anion exchange protein 1; erythroid anion exchange protein; erythrocyte membrane protein band 3; solute carrier family 4, anion exchanger, number 1; DI; WD; AE1; WD1; BND3; EPB3; EMPB3; MGC116750; MGC116753; MGC126619; MGC126623;
Gene ID	6521
mRNA Refseq	NM_000342
Protein Refseq	NP_000333
MIM	109270
UniProt ID	P02730

 Tel: 1-631-559-9269 1-516-512-3133

 Email: info@creative-biomart.com  Fax: 1-631-938-8127

 45-1 Ramsey Road, Shirley, NY 11967, USA

SDS-PAGE



 Tel: 1-631-559-9269 1-516-512-3133

 Email: info@creative-biomart.com  Fax: 1-631-938-8127

 45-1 Ramsey Road, Shirley, NY 11967, USA