

Recombinant Human SLC4A1 Protein (Met1-Pro403), C-His tagged

Cat. No. SLC4A1-5108H **Lot. No.** (See product label)

SPECIFICATION

Product Overview	Recombinant human SLC4A1 (Met1-Pro403) fused with the C-terminal His tag was expressed in Mammalian cells.
Species	Human
Source	Mammalian Cells
ProteinLength	Met1-Pro403
Form	Lyophilized powder/frozen liquid
Molecular Mass	44.33 kDa
Endotoxin	< 1.0 EU/μg of the protein as determined by the LAL method.
Purity	>90% as determined by SDS-PAGE.
Notes	For research use only.
Storage	Use a manual defrost freezer and avoid repeated freeze thaw cycles. Store at 2 to 8 centigrade for one week. Store at -20 to -80 centigrade for twelve months from the date of receipt.
Storage Buffer	Supplied as solution form in PBS or lyophilized from PBS.

 Tel: 1-631-559-9269 1-516-512-3133

 Email: info@creative-biomart.com  Fax: 1-631-938-8127

 45-1 Ramsey Road, Shirley, NY 11967, USA

Reconstitution Reconstitute in sterile water for a stock solution.

Shipping They are shipped out with dry ice/blue ice unless customers require otherwise.

GENE INFORMATION

Gene Name SLC4A1 solute carrier family 4, anion exchanger, member 1 (erythrocyte membrane protein band 3, Diego blood group) [Homo sapiens (human)]

Official Symbol SLC4A1

Synonyms SLC4A1; solute carrier family 4, anion exchanger, member 1 (erythrocyte membrane protein band 3, Diego blood group); AE1, DI, EPB3, Waldner blood group, WD; band 3 anion transport protein; CD233; FR; Froese blood group; RTA1A; SW; Swann blood group; WR; Wright blood group; anion exchanger 1; anion exchanger-1; Waldner blood group; anion exchange protein 1; erythroid anion exchange protein; erythrocyte membrane protein band 3; solute carrier family 4, anion exchanger, number 1; DI; WD; AE1; WD1; BND3; EPB3; EMPB3; MGC116750; MGC116753; MGC126619; MGC126623;

Gene ID 6521

mRNA Refseq NM_000342

Protein Refseq NP_000333

MIM 109270

UniProt ID P02730

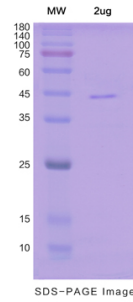
 Tel: 1-631-559-9269 1-516-512-3133

 Email: info@creative-biomart.com  Fax: 1-631-938-8127

 45-1 Ramsey Road, Shirley, NY 11967, USA



SDS-PAGE



Tel: 1-631-559-9269 1-516-512-3133

Email: info@creative-biomart.com Fax: 1-631-938-8127

45-1 Ramsey Road, Shirley, NY 11967, USA