

Recombinant Human SLC5A2 Protein (1-102 aa), His-Myc-tagged

Cat. No. SLC5A2-2210H Lot. No. (See product label)

SPECIFICATION

Product Overview	Recombinant Human SLC5A2 Protein (1-102 aa) is produced by E. coli expression system. This protein is fused with a 10xHis tag at the N-terminal and a Myc tag at the C-terminal. Research Area: Signal Transduction. Protein Description: Partial.
Species	Human
Source	E.coli
ProteinLength	1-102 aa
Description	Sodium-dependent glucose transporter. Has a Na ⁺ to glucose coupling ratio of 1:1. Efficient substrate transport in mammalian kidney is provided by the concerted action of a low affinity high capacity and a high affinity low capacity Na ⁺ /glucose cotransporter arranged in series along kidney proximal tubules.
Form	Tris-based buffer,50% glycerol
Molecular Mass	15.5 kDa
AA Sequence	MEEHTEAGSAPEMGAQKALIDNPADILVIAAYFLLVIGVGLWSMCRTNRGTVGGYFL AGRSMVWWPVGASLFFASNIGSGHFVGLAGTGAASGLAVAGFEWNA
Purity	> 90% as determined by SDS-PAGE.

 Tel: 1-631-559-9269 1-516-512-3133

 Email: info@creative-biomart.com  Fax: 1-631-938-8127

 45-1 Ramsey Road, Shirley, NY 11967, USA

Notes	Repeated freezing and thawing is not recommended. Store working aliquots at 4 centigrade for up to one week.
Storage	The shelf life is related to many factors, storage state, buffer ingredients, storage temperature and the stability of the protein itself. Generally, the shelf life of liquid form is 6 months at -20 centigrade/-80 centigrade. The shelf life of lyophilized form is 12 months at -20 centigrade/-80 centigrade.
Concentration	A hardcopy of COA will be sent along with the products. Please refer to it for detailed information.

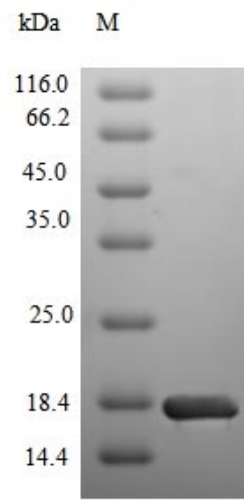
GENE INFORMATION

Gene Name	SLC5A2 solute carrier family 5 (sodium/glucose cotransporter), member 2 [Homo sapiens]
Official Symbol	SLC5A2
Synonyms	SLC5A2; SGLT2; sodium/glucose cotransporter 2; Na(+)/glucose cotransporter 2;
Gene ID	6524
mRNA Refseq	NM_003041
Protein Refseq	NP_003032
MIM	182381
UniProt ID	P31639

 Tel: 1-631-559-9269 1-516-512-3133

 Email: info@creative-biomart.com  Fax: 1-631-938-8127

 45-1 Ramsey Road, Shirley, NY 11967, USA



(Tris-Glycine gel) Discontinuous SDS-PAGE (reduced) with 5% enrichment gel and 15% separation gel.

 Tel: 1-631-559-9269 1-516-512-3133

 Email: info@creative-biomart.com  Fax: 1-631-938-8127

 45-1 Ramsey Road, Shirley, NY 11967, USA