

Recombinant Human SLC6A11 Protein, GST-tagged

Cat. No. SLC6A11-666H Lot. No. (See product label)

SPECIFICATION

Product Overview	Recombinant Human SLC6A11 Full-Length ORF Protein (1-208 aa) is produced by Wheat Germ (in vitro) expression system. This protein is fused with a GST tag at the N-terminal.
Species	Human
Source	Wheat Germ
ProteinLength	1-208 aa
Description	Gamma-aminobutyric acid (GABA) is a major inhibitory neurotransmitter. GABAergic neurotransmission is terminated by the uptake of GABA into the presynaptic terminal and the surrounding astroglial cells by sodium-dependent transporters, such as SLC6A11.
Form	50 mM Tris-HCl, 10 mM reduced Glutathione, pH=8.0 in the elution buffer.
Molecular Mass	49.4 kDa
AA Sequence	MTAEKALPLGNGKAAEEARESEAPGGGCSSGGAAPARHPRVKRDKAVHERGHWN NKVEFVLSVAGEIIGLGNVWRFPYLCYKNGGGAFILIPYVFFICCGIPVFFLETALGQF TSEGGITCWRKVCPLFEGIGYATQVIEAHLNVYIIIIILAWAIFYLSNCFTTELPWATCG HEWNTENCVEFQKLNVSNYSHVSLQNATSPVMEFWE
Applications	Enzyme-linked Immunoabsorbent Assay; Western Blot (Recombinant protein);

 Tel: 1-631-559-9269 1-516-512-3133

 Email: info@creative-biomart.com  Fax: 1-631-938-8127

 45-1 Ramsey Road, Shirley, NY 11967, USA

Antibody Production; Protein Array

Notes

Best use within three months from the date of receipt of this protein

Storage

Store at -80 centigrade. Aliquot to avoid repeated freezing and thawing.

GENE INFORMATION

Gene Name

SLC6A11 solute carrier family 6 (neurotransmitter transporter, GABA), member 11 [Homo sapiens]

Official Symbol

SLC6A11

Synonyms

SLC6A11; GAT3; GAT4; GAT-3;

Gene ID

6538

mRNA Refseq

NM_014229

Protein Refseq

NP_055044

MIM

607952

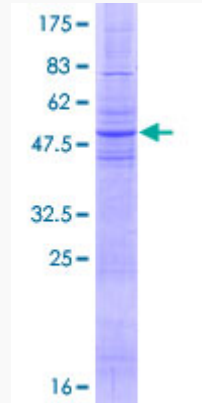
UniProt ID

P48066

 Tel: 1-631-559-9269 1-516-512-3133

 Email: info@creative-biomart.com  Fax: 1-631-938-8127

 45-1 Ramsey Road, Shirley, NY 11967, USA



12.5% SDS-PAGE Stained with Coomassie Blue.

 Tel: 1-631-559-9269 1-516-512-3133

 Email: info@creative-biomart.com  Fax: 1-631-938-8127

 45-1 Ramsey Road, Shirley, NY 11967, USA