

Recombinant Full Length Human SLC6A3 Protein, N-GST-tagged

Cat. No. SLC6A3-696HFL **Lot. No.** (See product label)

SPECIFICATION

Product Overview	Recombinant Full Length Human SLC6A3 Protein, fused to GST-tag at N-terminus, was expressed in Wheat Germ (in vitro).
Species	Human
Source	Wheat Germ
Description	This gene encodes a dopamine transporter which is a member of the sodium- and chloride-dependent neurotransmitter transporter family. The 3' UTR of this gene contains a 40 bp tandem repeat, referred to as a variable number tandem repeat or VNTR, which can be present in 3 to 11 copies. Variation in the number of repeats is associated with idiopathic epilepsy, attention-deficit hyperactivity disorder, dependence on alcohol and cocaine, susceptibility to Parkinson disease and protection against nicotine dependence.
Form	50 mM Tris-HCl, 10 mM reduced Glutathione, pH=8.0 in the elution buffer.
Molecular Mass	94.9 kDa
AA Sequence	MSKSKCSVGLMSSVVAPAKEPNAVGPKEVELILVKEQNGVQLTSSTLTNPRQSPVE AQDRETWGKKIDFLLSVIGFAVDLANVWRFPYLCYKNGGGAFLVPYLLFMVIAGMPL FYMELALGQFNREGAAGVWKICPILKGVGFTVILISLYVGFFYNVIIAWALHYLFSSFT TELPWIHCNNSWNSPNCSDAHPGDSSGDSSGLNDFTFGTTPAAEYFERGVLHLHQ HGIDDLGPPRWQLTACLVLVIVLLYFSLWKGVKTSKGVVWITATMPYVVLTAALLRGV

 Tel: 1-631-559-9269 1-516-512-3133

 Email: info@creative-biomart.com  Fax: 1-631-938-8127

 45-1 Ramsey Road, Shirley, NY 11967, USA



TLPGAIDGIRAYLSVDFYRLCEASVWIDAATQVCFSLGVGFGVLIAFSSYNKFTNNCY
 RDAIVTTSINSLTSFSSGFVVSFLGYMAQKHSVPIGDVAKDGPGLIFIYPEAIATLPL
 SSAWAVVFFIMLLTLGIDSAMGGMESVITGLIDEFQLLHRHRELFTLFIVLATFLLSLFC
 VTNGGIYVFTLLDHFAAGTSILFGVLIEAIGVAWFYGVGQFSDDIQQMTGQRPSLYW
 RLCWKLVSFCFLFVVVVSIVTFRPPHYGAYIFPDWANALGWVIATSSMAMVPIYAAY
 KFCSLPGSFREKLAYAIAPEKDRELVDREVRQFTLRHWLKV

Purity	Glutathione Sepharose 4 Fast Flow
Applications	Enzyme-linked Immunoabsorbent Assay Western Blot (Recombinant protein) Antibody Production Protein Array
Notes	Best use within three months from the date of receipt of this protein.
Storage	Store at -80 centigrade. Aliquot to avoid repeated freezing and thawing.
Preparation	in vitro wheat germ expression system
Full Length	Full L.

GENE INFORMATION

Gene Name	SLC6A3 solute carrier family 6 member 3 [Homo sapiens (human)]
Official Symbol	SLC6A3
Synonyms	DAT; DAT1; PKDYS; PKDYS1
Gene ID	6531

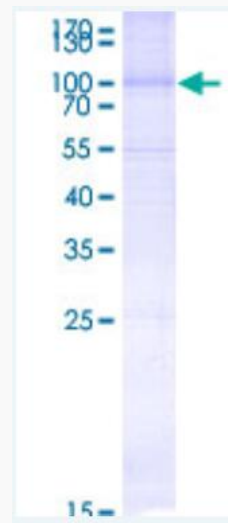
mRNA Refseq [NM_001044.5](#)

Protein Refseq [NP_001035.1](#)

MIM [126455](#)

UniProt ID [Q01959](#)

SDS-PAGE



12.5% SDS-PAGE Stained with Coomassie Blue.

 Tel: 1-631-559-9269 1-516-512-3133

 Email: info@creative-biomart.com  Fax: 1-631-938-8127

 45-1 Ramsey Road, Shirley, NY 11967, USA